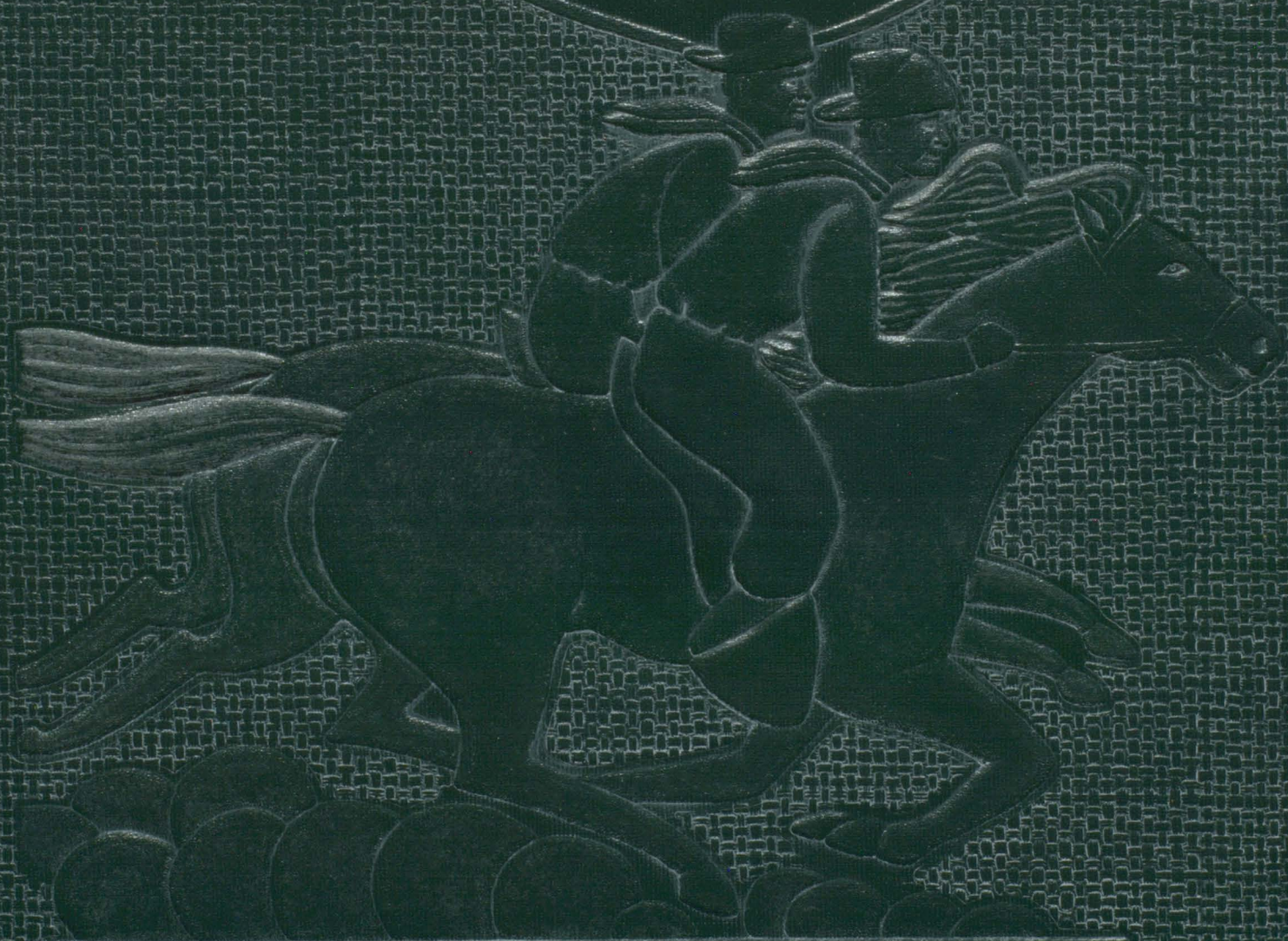


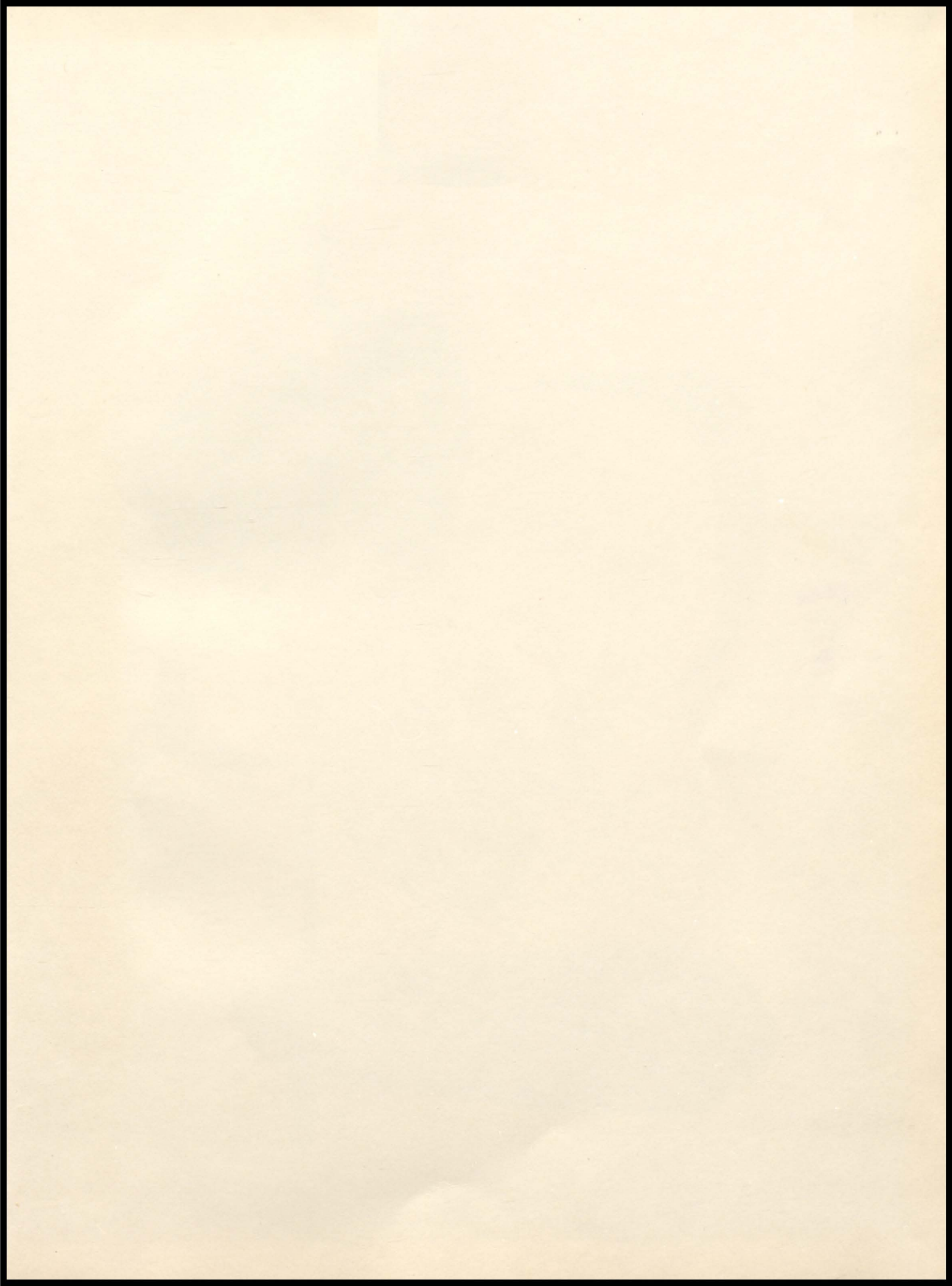
**THE COWBOY**

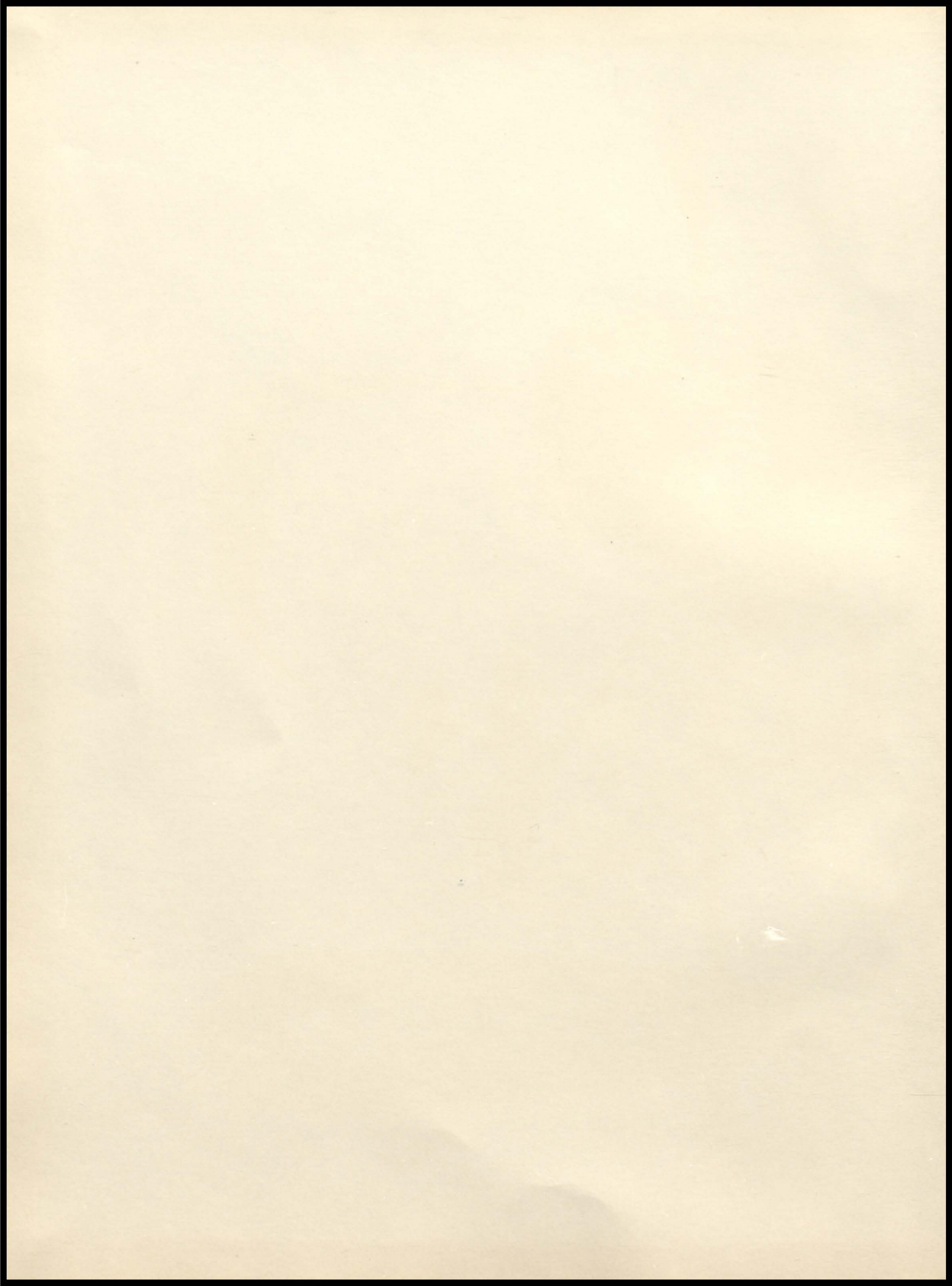


**1955**













DEDICATION



. TWENTY YEARS OF SERVICE- That is the record Mr. Modine has as custodian of Colome High School. The COWBOY staff appreciates the service that Mr. Modine has given the school, and affectionately dedicates their yearbook to him.

MR. MODINE  
Twenty Years Ago



MR. MODINE  
Today



Last Christmas the faculty and student body decided that anyone who had been associated with the school for twenty years is worthy of some special recognition. They went together and purchased a gift.

At the close of the assembly program on December 24, an SOS was sent out for Mr. Modine. When he made his appearance all set to make some repairs, he was presented with a platform rocker and hassock.



Mr. Uken informs Mr. Modine of the "trouble"--a platform rocker.

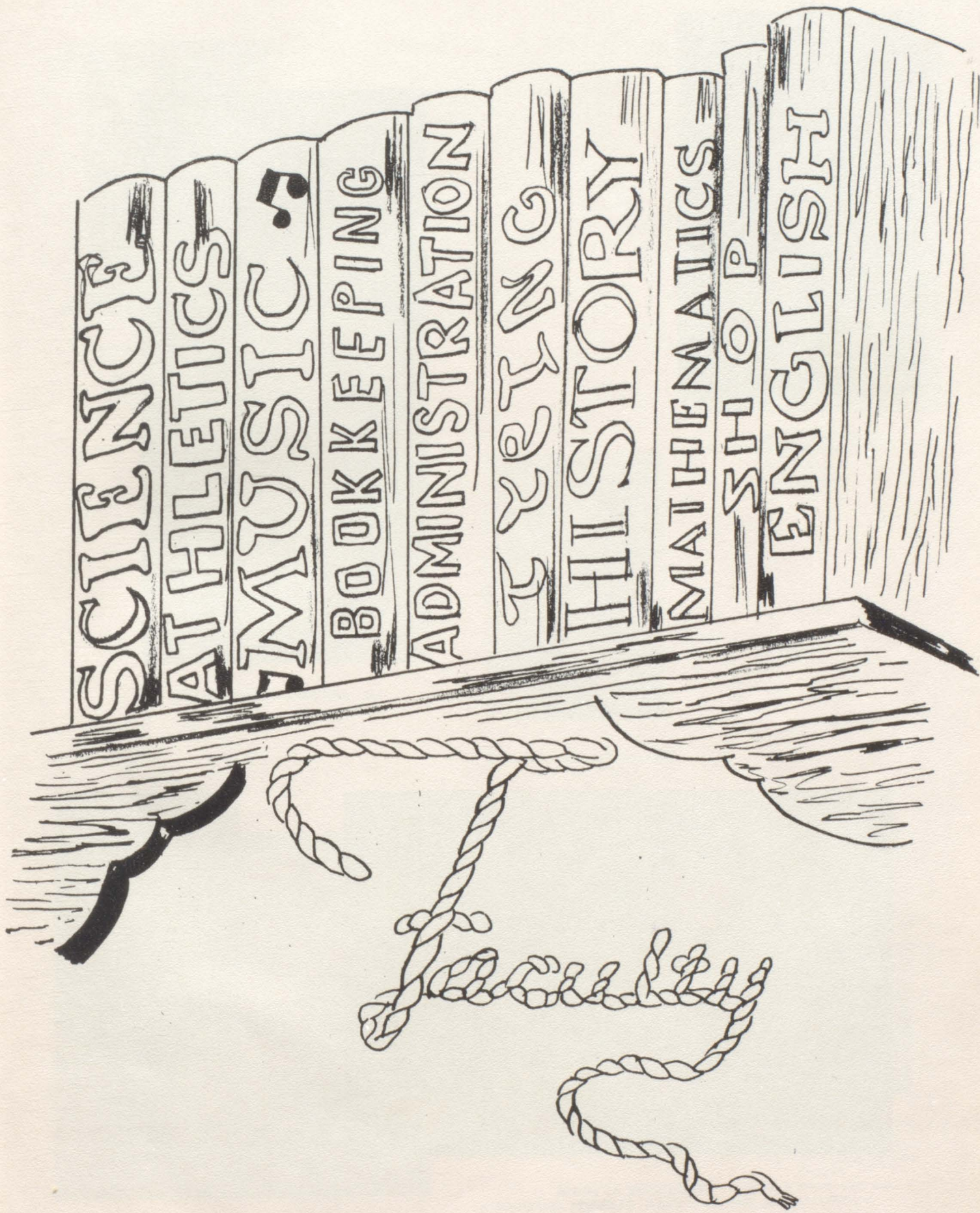


Mr. Modine, still weak from the surprise, drops into his new chair.



Mr. Modine enjoying his gift in his own home.









O. R. GRETSCHMANN  
Superintendent  
B.S., S.S.T.C.  
Manual Training



MR. AND MRS. GRETSCHMANN



THE UKENS AT HOME  
MR. AND MRS. UKEN, GLENNY, AND GLORIA



MR. LEO UKEN  
B.S., S.S.T.C.  
Principal  
Football Coach  
Social Sciences  
Biology  
General Science





RUSSELL "TUT" KLOSTERMAN  
 B.S. General Beadle  
 St. John's University  
 Collegeville, Minnesota  
 Basketball Coach  
 Math  
 Social Science



MR. KLOSTERMAN AT HIS DESK



MRS. O. R. GRETSCHMANN  
 B.S., S.S.T.C.  
 Nebraska University  
 Colorado State Teachers College  
 Commercial  
 Declamation



MR. LAPP AND HIS FAMILY IN THE HILLS

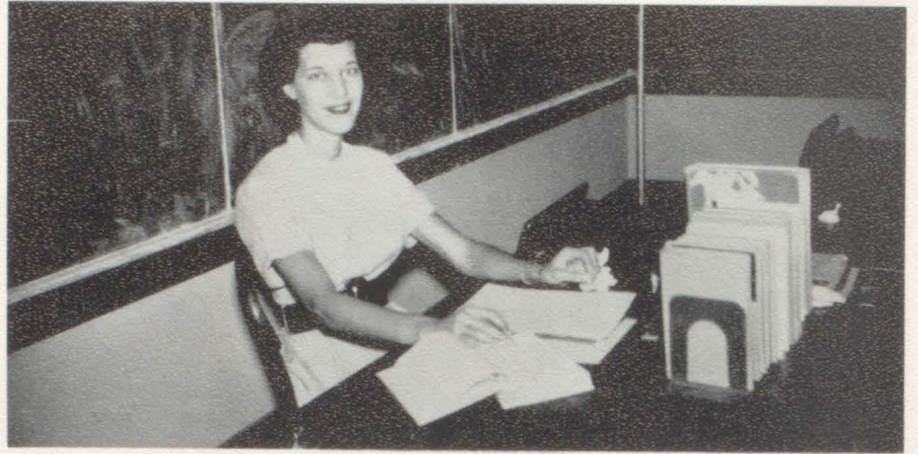


LEO C. LAPP  
 B.S., Wheaton, Illinois  
 M. Ed., Colorado University  
 English  
 Social Science, Sec. Sem.  
 Librarian





MRS. BETTY REINERS  
Wayne State Teachers College  
Fifth and Sixth Grades



MRS. REINERS AT HER DESK



MRS. GUERARD IN THE CLASSROOM



MRS. OLIVE GUERARD  
B.S., S.S.T.C.  
Third and Fourth Grades





MRS. BARBARA PFEIFER  
Springfield  
Spearfish Normal  
Albion Normal-Idaho  
Seventh and Eighth Grades



MRS. PFEIFER INSTRUCTING HER GEOGRAPHY CLASS.



MRS. LILLIE HOLDEN  
With Her Mother  
First and Second Grades  
Second Semester



MRS. WARREN SEALEY  
Dakota Wesleyan University  
Mitchell, South Dakota  
First and Second Grades  
First Semester



MRS. SEALEY AT HER DESK.



# Board of Education



ERNIE HARMACEK  
Colome Lockers



FRANK ZIMMERMAN  
Hardware Dealer



LYLE MANZER  
Standard Service  
DeSoto and Plymouth Dealer



PERRY LEWIS  
Insurance Representative



DeETTE ELLIOTT  
Bank Clerk

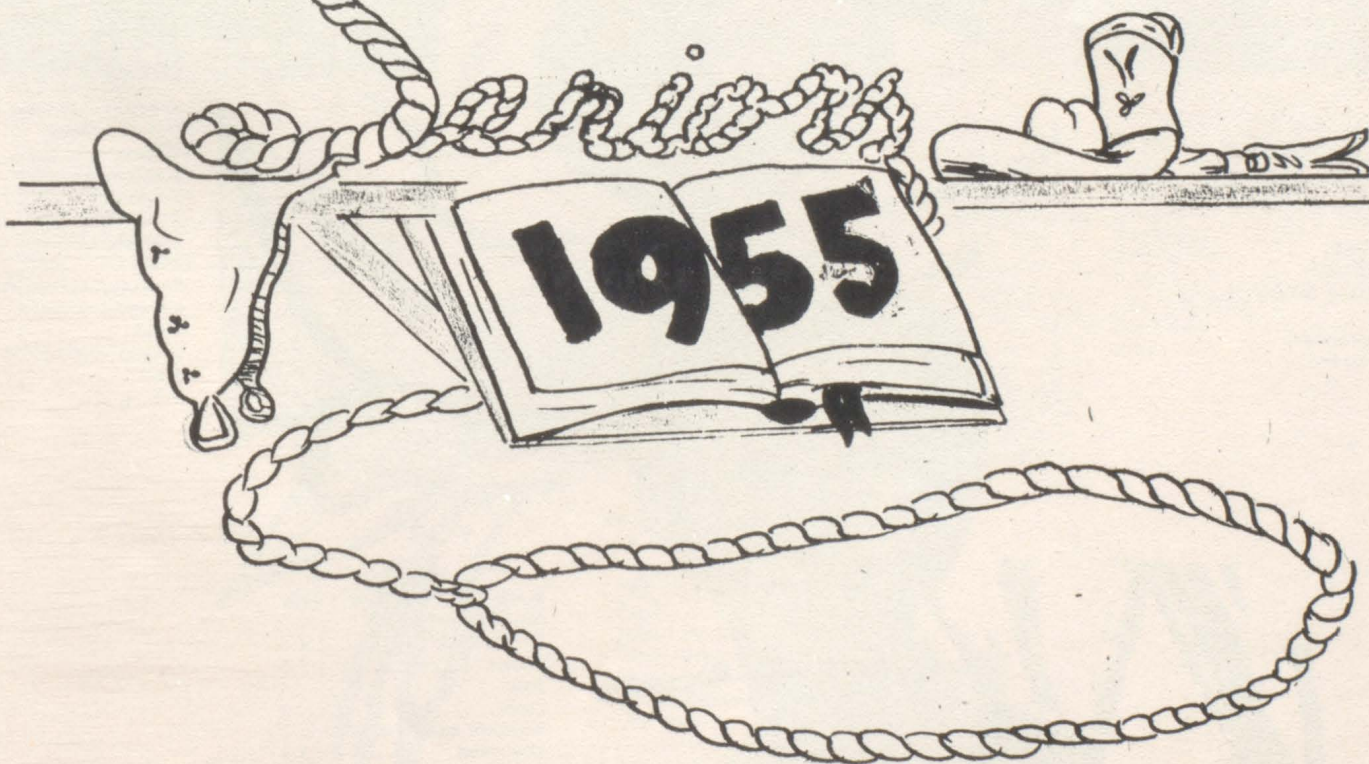
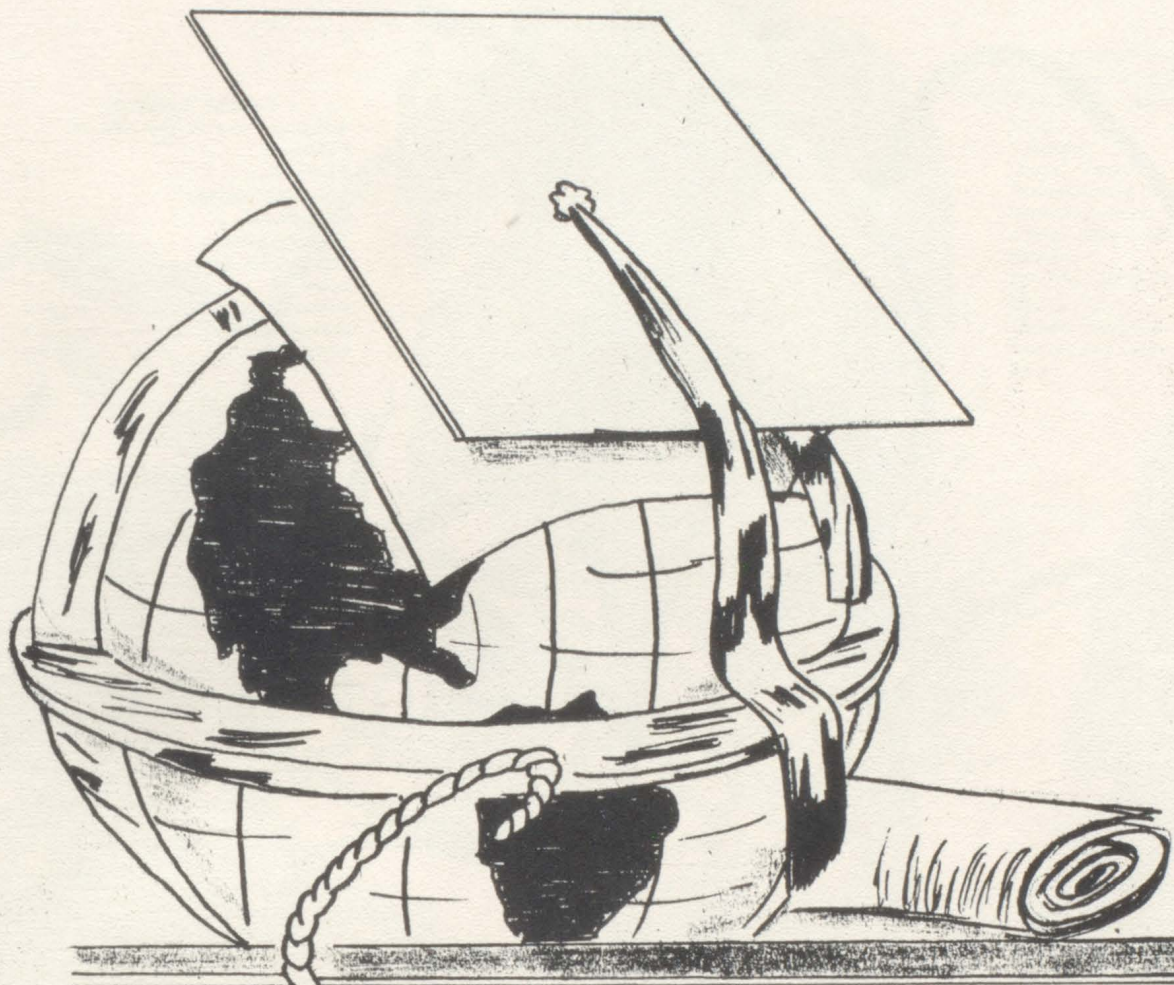


MARK LARSON  
Hardware Dealer



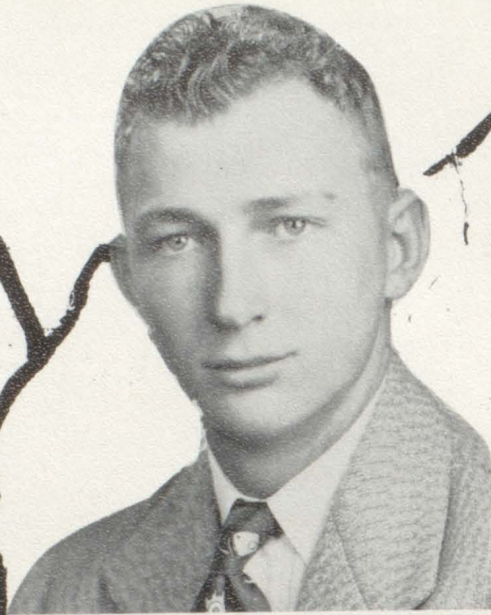
VERN TARR  
Mail Carrier and  
Station Attendant







CLASS FLOWER: Red Rose



**LARRY LARSON**  
 A Yeast Cake In The Gift Of  
 Gabblers  
 Football . . . . . 1  
 Football Manager . . . . . 2  
 Basketball . . . . . 4  
 Mixed Chorus . . . . . 1,2  
 Boys' Glee Club . . . . . 1,2  
 Library . . . . . 4  
 Class Officer . . . . . 3  
 Annual Staff . . . . . 3  
 C Club . . . . . 3,4



**JOAN RAE DILL**  
 The Fruit Derived From Labor Is  
 The Sweetest Of All Pleasures.  
 Band . . . . . 1,2,3,4  
 Chorus . . . . . 1,2,3  
 Glee Club . . . . . 1,2,3  
 Sextette and Octette . . . . .  
 Annual and Lariat Staff . . . . . 3,4  
 Homecoming Attendant . . . . . 4  
 Play . . . . . 3,4  
 Girls' Club . . . . . 1,2,3  
 Class Officer . . . . . 4  
 Girls' State Alternate . . . . .  
 Library . . . . . 4  
 Prom Attendant . . . . . 4  
 Valedictorian

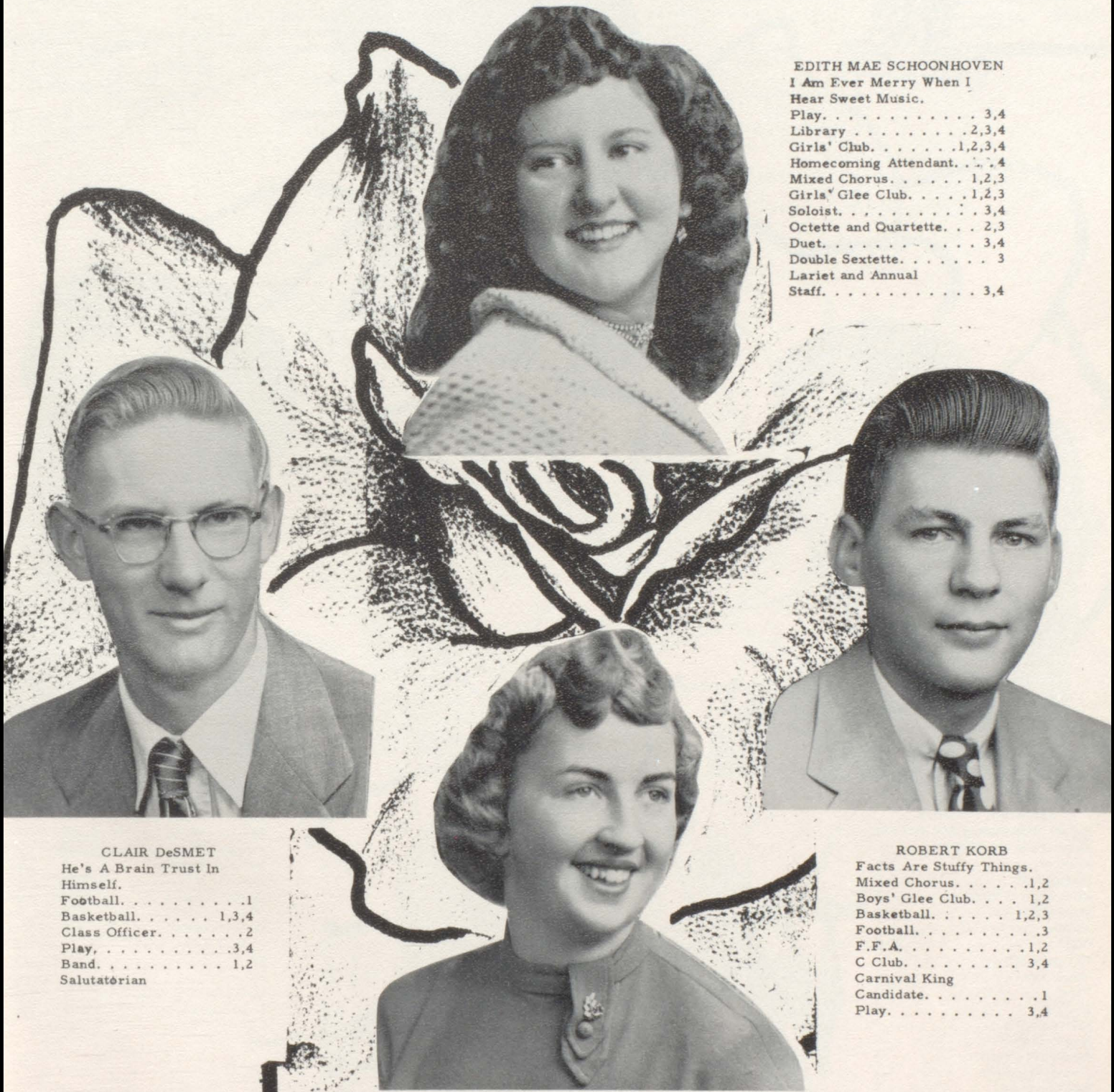


**RUSSELL TARRELL**  
 A Rifler--He Got A Bang  
 Out Of School.  
 Winner . . . . .  
 Basketball . . . . .  
 Football . . . . .  
 Track . . . . .  
 Chorus . . . . .  
 Play . . . . . 3,4  
 Student Council Pres. . . . .  
 Office . . . . .  
 Band . . . . .  
 Annual And Lariat  
 Staff . . . . .  
 F.F.A. . . . .



**VERA MAE CONDON**  
 Even The Birds Can't Sing  
 More Sweetly.  
 Girls' Glee Club . . . . . 1,2,3  
 Mixed Chorus . . . . . 1,2,3  
 Solo . . . . . 4  
 Duet . . . . . 4  
 Sextette and Octette . . . . . 3  
 Pep Club . . . . . 1,2,3,4  
 Homecoming Attendant  
 Lariat And Annual  
 Staff . . . . . 3,4  
 Band . . . . . 1,2,3,4  
 Play . . . . . 3,4





EDITH MAE SCHOONHOVEN  
I Am Ever Merry When I  
Hear Sweet Music.

- Play. . . . . 3,4
- Library . . . . . 2,3,4
- Girls' Club. . . . . 1,2,3,4
- Homecoming Attendant. . . . 4
- Mixed Chorus. . . . . 1,2,3
- Girls' Glee Club. . . . . 1,2,3
- Soloist. . . . . 3,4
- Octette and Quartette. . . . 2,3
- Duet. . . . . 3,4
- Double Sextette. . . . . 3
- Lariat and Annual  
Staff. . . . . 3,4

CLAIR DeSMET  
He's A Brain Trust In  
Himself.

- Football. . . . . 1
- Basketball. . . . . 1,3,4
- Class Officer. . . . . 2
- Play. . . . . 3,4
- Band. . . . . 1,2
- Salutatorian

ROBERT KORB  
Facts Are Stuffy Things.

- Mixed Chorus. . . . . 1,2
- Boys' Glee Club. . . . . 1,2
- Basketball. . . . . 1,2,3
- Football. . . . . 3
- F.F.A. . . . . 1,2
- C Club. . . . . 3,4
- Carnival King  
Candidate. . . . . 1
- Play. . . . . 3,4

BAYONE KAY STENSON  
No Truer Heart Or Friend  
More Loyal.

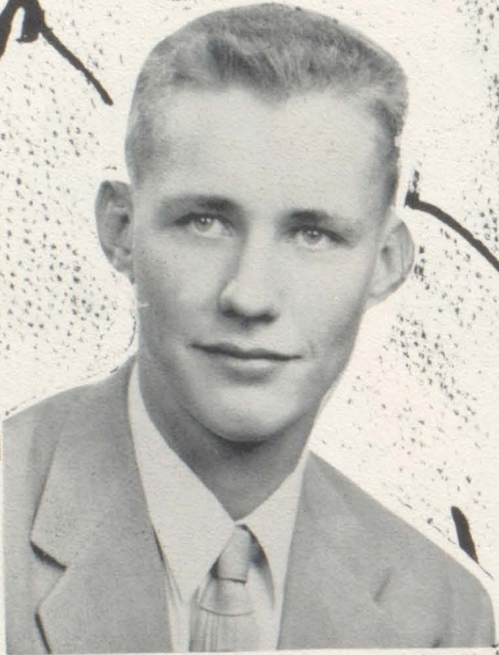
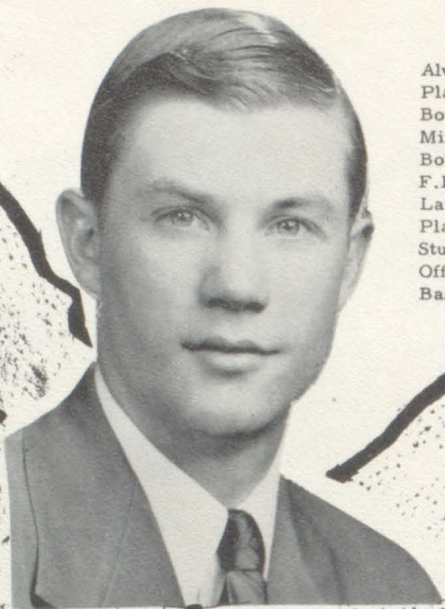
- Class Officer. . . . . 1
- Pep Club. . . . . 1,2,3,4
- Band. . . . . 1,2,3,4
- Mixed Chorus. . . . . 1,2,3
- Girls' Glee Club. . . . . 1,2,3
- Quartette and Octette. . . . 3
- Double Sextette. . . . . 3
- Library. . . . . 2,3
- Declamation. . . . . 1,2,3,4
- Annual and Lariat  
Staff. . . . . 3,4
- Homecoming Attendant. . . . 4
- Play Attendant. . . . . 4
- Play. . . . . 3,4





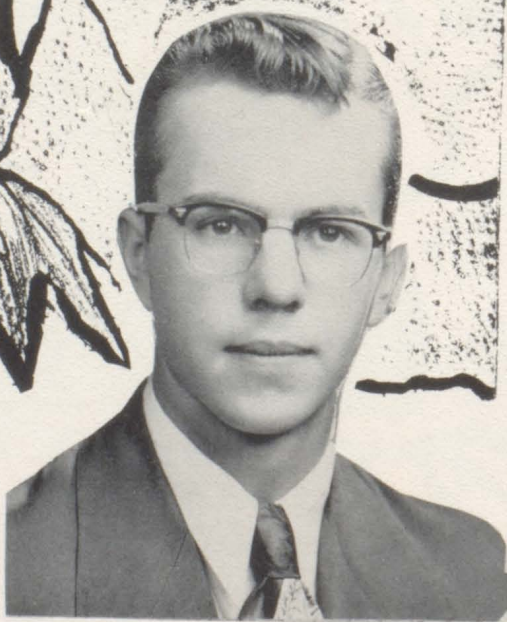
**DENNIS DEMERS**  
 Always Ready For Work And  
 Play.  
 Boys' Glee Club. . . . . 1,2,3  
 Mixed Chorus. . . . . 1,2,3  
 Boys' Quartette. . . . . 3  
 F.F.A. . . . . 1,2  
 Lariat Staff. . . . . 3,4  
 Play. . . . . 3,4  
 Student Council. . . . . 2  
 Office. . . . . 3,4  
 Basketball. . . . . 3

**CLASS MOTTO:**  
 Looking Toward  
 Brighter Horizons.

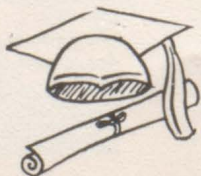


**DARREL POCHOP**  
 A Jaw That Seems To Already  
 Have Made Up Its Mind.  
 Football. . . . . 1,2,3,4  
 Basketball. . . . . 1,2,3,4  
 Boys' Glee Club. . . . . 1,2  
 Mixed Chorus. . . . . 1,2  
 Annual And Lariat  
 Staff. . . . . 3,4  
 Carnival King  
 Candidate. . . . . 3  
 Play. . . . . 3,4  
 C Club. . . . . 3,4  
 Class Officer. . . . . 2,3,4  
 Boys' State. . . . . 3  
 Student Council. . . . . 3  
 Track Manager. . . . . 1,2  
 Declamation. . . . . 3  
 F.F.A. . . . . 1,2

**DARLENE JO KRIVANEK**  
 A Comrade Blithe And Full  
 Of Glee.  
 Student Council. . . . . 2,4  
 Girls' Glee Club. . . . . 1,2,3  
 Quartette and Octette. . . . . 3  
 Mixed Chorus. . . . . 1,2,3  
 Accompanist. . . . . 2,3,4  
 Double Sextette. . . . . 3  
 Band. . . . . 2,3,4  
 Girls' Club. . . . . 1,2,3,4  
 Play. . . . . 3,4  
 Declamation. . . . . 3,4  
 Annual And Lariat  
 Staff. . . . . 3,4  
 Office. . . . . 4  
 Homecoming Attendant. . . . . 4  
 Prom Attendant. . . . . 2



**DENNIS DYKEMAN**  
 I Know A Lot But I Never  
 Can Think Of It.  
 Mixed Chorus. . . . . 1,2,3  
 Boys' Glee Club. . . . . 1,2,3  
 Boys' Sextette. . . . . 1,2  
 Track. . . . . 1  
 Basketball. . . . . 1  
 Football Manager. . . . . 1,2



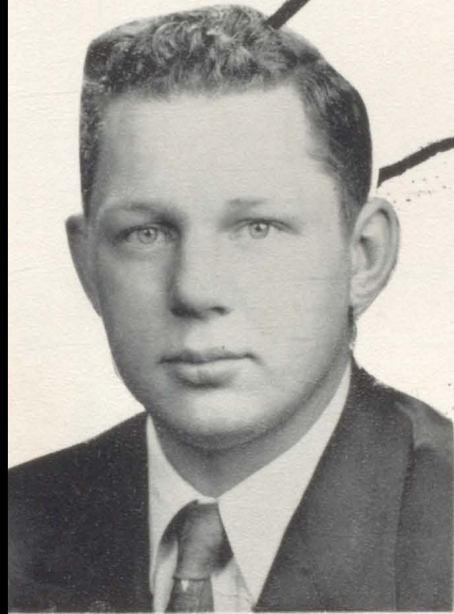


CLASS COLORS: Green and White



**VELMA JEAN HARTER**  
 There's Mischief In Them  
 Thar Eyes.

Student Council. . . . .	1,3
Girls' Glee Club. . . . .	1,2,3
Chorus. . . . .	1,2,3
Pep Club President. . . . .	4
Cheerleader. . . . .	2,4
Class Officer. . . . .	4
Carnival Queen	
Candidate. . . . .	3
Homecoming Queen. . . . .	4
Play. . . . .	3,4
Library. . . . .	4
Lariat And Annual	
Staff. . . . .	3,4



**JOE KEEVER**  
 A Quiet Lad, But Quite A  
 Lad.

Boys' Glee Club. . . . .	1,2
Mixed Chorus. . . . .	1,2
Basketball. . . . .	1,2,3,4
Football. . . . .	1,2,3,4
F.F.A. . . . .	1,2
C Club. . . . .	1,2,3,4
Carnival King. . . . .	2
Play. . . . .	3,4



**VERN MODINE**  
 He Puts The Snap In Foot-  
 ball.

Mixed Chorus. . . . .	1
Boys' Glee Club. . . . .	1
Basketball. . . . .	1,2,3,4
Football. . . . .	1,2,3,4
F.F.A. . . . .	1,2
C Club Officer. . . . .	4
C Club. . . . .	1,2,3,4



**LORRAINE COUCH**  
 True Beauty Lies In Deep  
 Retreats.

Philip. . . . .	2
Gregory. . . . .	3
Chorus. . . . .	1
Girls' Glee Club. . . . .	1
Girls' Club. . . . .	1,4
Annual Staff. . . . .	4





RUSSELL TARRELL



VERA CONDON



MRS. GRETSCHMANN

# At The Once Upon



BAYONE STENSON WITH  
IDALEE JOHNSON



LORRAINE COUCH



EDITH SCHOONHOVEN

DARLENE KRIVANEK



JOE KEEVER

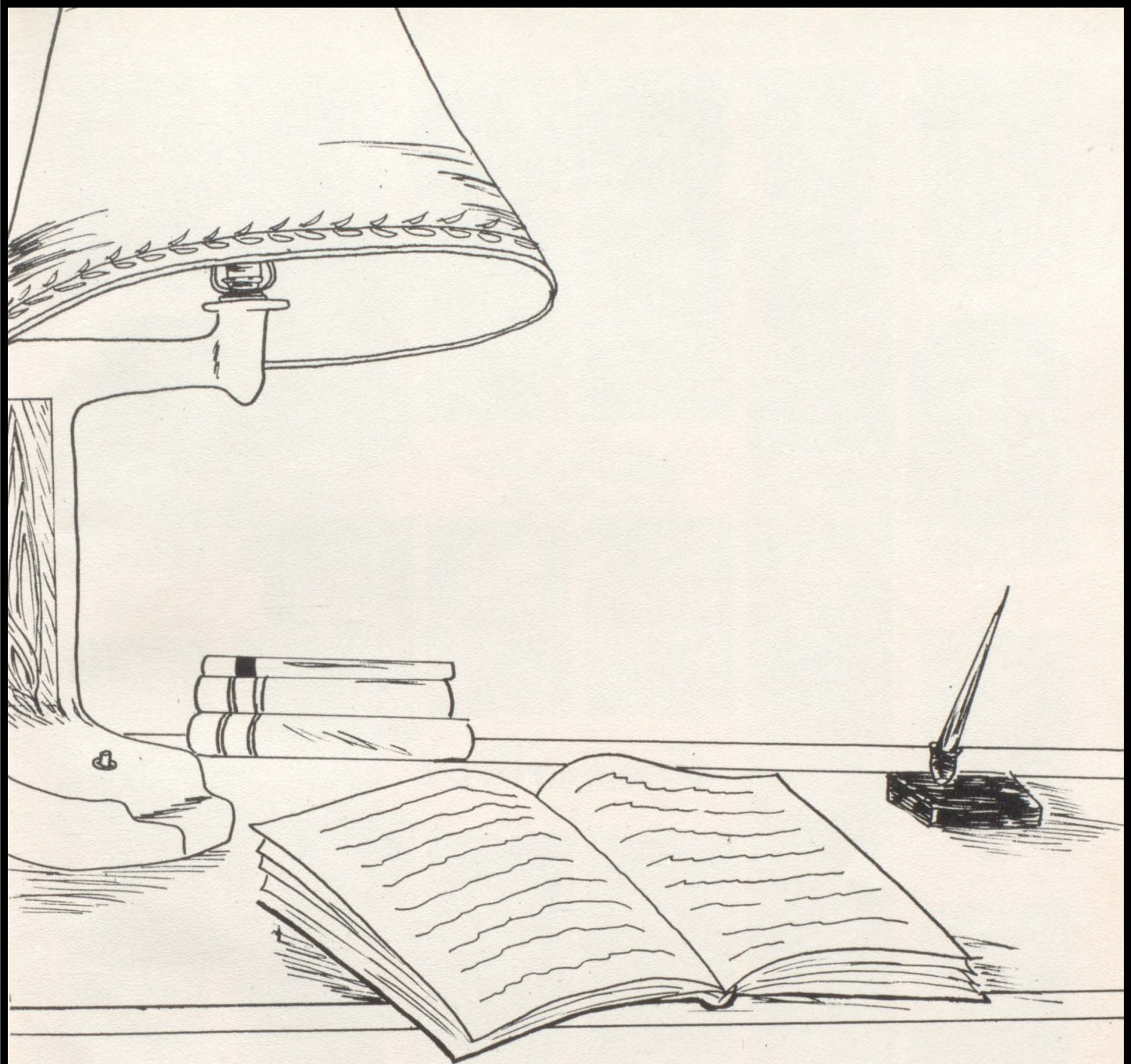


VERN MODINE



JOAN DILL





Undergraduate



J U N I O R S



BESSIE  
HARTER



FRANKLIN  
GISH



JEROLD  
HODGINS



VERN  
BERTRAM



FLOYD  
CROSTON



EDYTHE  
LILLY



DONNA  
HOFELDT



ANITA  
SPINAR



PHYLLIS  
KEWLEY



DARLENE  
ELLIOT



MARSHA  
VROMAN



DICK  
DEMERS



DONALD  
CONDON



JACK  
CORK



DARUS  
DAWSON



VERA  
KAISER



DUWAYNE  
MAAS



LORAN  
TARRELL



ROGER  
POCHOP



RONALD  
CROSTON



BARBARA  
PETTIT

1  
9  
5  
6





STAN STENSON



BILL HARTER



DELORES KEWLEY



HAZEL COUCH



JUDY HOLLOPETER



MONTE WOOLHISER



LOWELL AXTELL



MARVA KOENIG



Sophomores



NORMA FARRIS



CHAN SHIPPY



LaWAYNE BELLANDER



CONNY AUBERT



JIM MANZER



LARRY BERTRAM



DEAN HOLLOPETER



ERNEST HOLFELDT



SHIRLEY LONDON



SHERRY LONDON



KAY KAUKAAS



ALBERT DAWSON



ROGER MILLER



DICK SMITH



MARLENE DYKEMAN



VERNA WOODS



SHIRLEY MODINE



PAUL PEITZ





ROZELLA  
DEMERS



EUGENE  
FARRIS



NEIDA  
CAHOY



JOE  
DeSMÉT



LaVONNE  
KOSTAL



GARRY  
STAHLECKER



ELIZABETH  
REISTER



LONNIE  
HODGINS



LEONORA  
JORGENSEN



LEONARD  
STRITECKY



JOYCE  
WOLTOFF



PAT  
HARTER



LaVONNE  
KRIVANEK



EDWARD  
WAGNER



DONNA  
LARSON



ALLEN  
CROSTON



MARGARET  
LEETCH



EMIL  
KAISER



RALPH  
HARTER



MELVIN  
SPINAR



JEANNE  
MANTHEY



JOY  
MANTHEY



GORDON  
KEOGH



ELDON  
FETZER

19

MELVIN HEATH  
Student Council



SHARON SORBER  
Secretary



DOROTHY BOWER  
President



SHIRLEY STEIGER  
Vice-President



CHARLES SCHWARTZ  
Treasurer

58

LOIS BERTRAM  
Student Council

# Freshmen



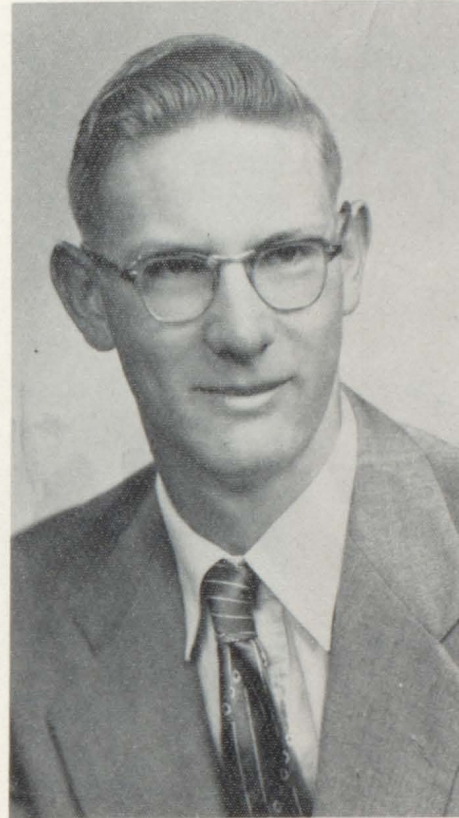


# Honor Page



**Valedictorian**

JOAN RAE DILL



**Salutatorian**

CLAIR DeSMET

EDYTHE LILLY



GIRLS' STATE-1955

VIRGINIA FULTZ



GIRLS' STATE-1954

PHYLLIS KEWLEY



GIRLS' STATE  
ALTERNATE 1955

MARSHA VROMAN



DISTRICT WINNER  
OF AMERICAN LEGION  
ORIGINAL ORATORICAL  
CONTEST.

As the COWBOY goes to  
press the Boys' State  
selection for 1955 has not  
yet been made by the Legion.

DARREL POCHOP



BOYS' STATE-1954



# Class Officers



S  
E  
N  
I  
O  
R  
S

President, Vern Modine; Vice-President, Joan Dill;  
Treasurer, Velma Harter; Secretary, Darrel Pochop.



S  
O  
P  
H  
O  
M  
O  
R  
E  
S

Vice-President, Roger Miller; Treasurer, Larry Bertram,  
President, Marlene Dykeman; Secretary, LaWayne Bellander.



# Class Officers



F  
R  
E  
S  
H  
M  
E  
N

Treasurer, Charles Schwartz; Vice-President Shirley Steiger; President, Dorothy Bowers; Secretary, Sherry Sorber.



J  
U  
N  
I  
O  
R  
S

Vice-President, Darus Dawson; Secretary, DuWayne Maas, President, Floyd Croston; Treasurer, Richard DeMers.



# Seniors Sponsored the Annual



Joe Keever and Robert Korb are selling an annual ad to Art Earl.



DENNY DYKEMAN



Vern Modine and Darrel Pochop are reporting the drive for the day to Clair DeSmet, and Russell Tarrell.



DENNIS DeMERS



LARRY LARSON



LEFT TO RIGHT: Lorraine Couch, Edith Schoonhoven, Velma Harter, and Vera Condon are preparing the subscription drive for the annual.





MRS. GRETSCHMANN



JOAN DILL



BAYONE STENSON

# Annual Staff



MARSHA VROMAN



STANDING: (Left to Right) Donna Larson, Anita Spinar, Marsha Vroman, Mrs. Gretschmann, Donna Hofeldt, and Shirley Modine.  
SITTING: Marlene Dykeman, Melvin Spinar, Joan Dill, Bayone Stenson, Darlene Krivanek, and Verna Woods.



VERNA WOODS



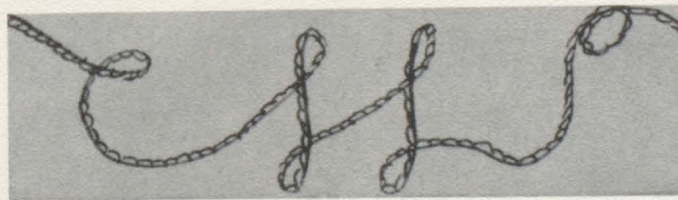
ANITA SPINAR



MARLENE DYKEMAN



DONNA LARSON



MELVIN SPINAR



DARLENE KRIVANEK



SHIRLEY MODINE





Cincinnati



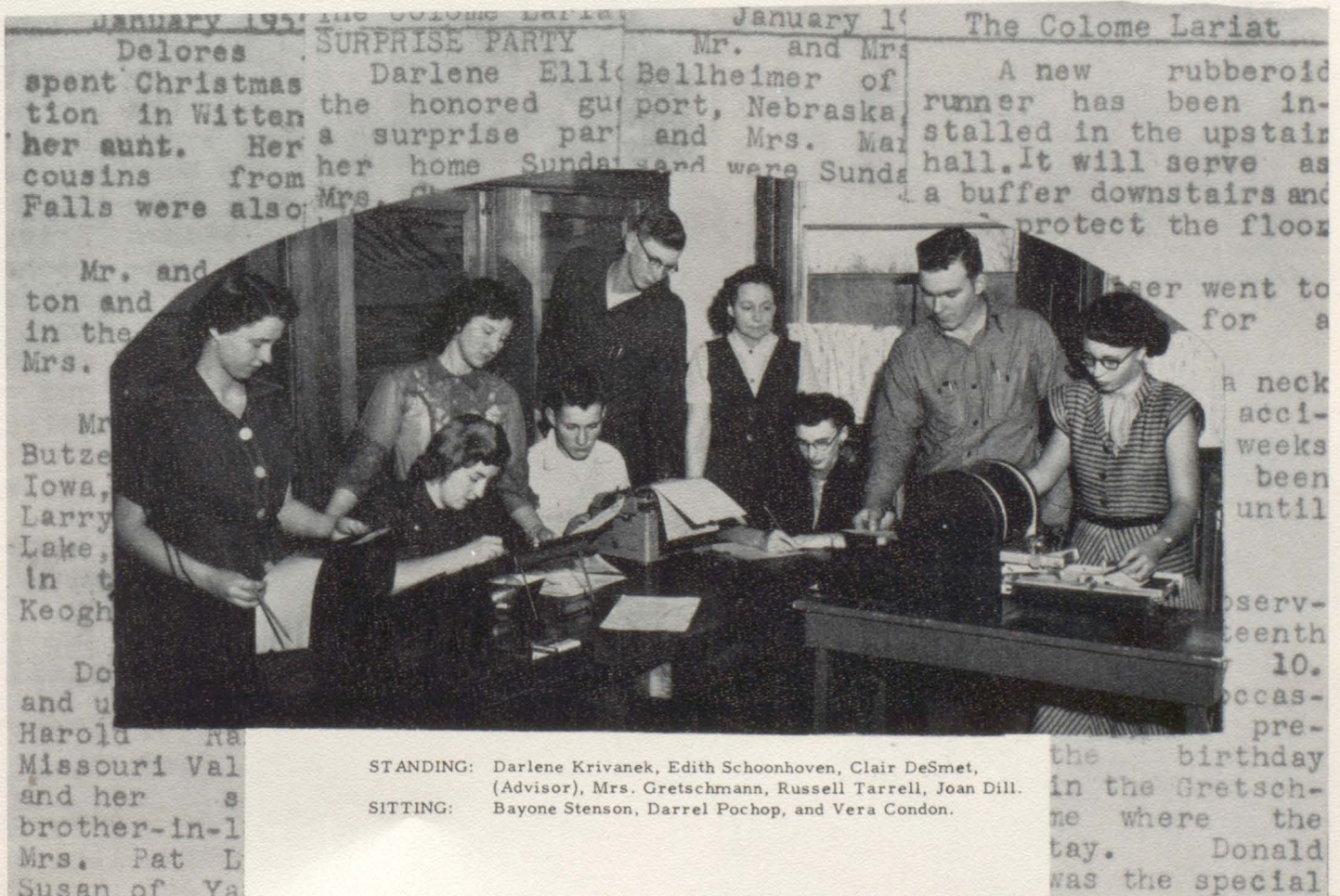
# Office Staff



LEFT TO RIGHT: Mr. Gretschmann, Superintendent; Darlene Krivanek, Bayone Stenson, Russell Tarrell, DuWayne Maas, Sharon London.



# Lariat Staff



STANDING: Darlene Krivanek, Edith Schoonhoven, Clair DeSmet, (Advisor), Mrs. Gretschmann, Russell Tarrell, Joan Dill.  
SITTING: Bayone Stenson, Darrel Pochop, and Vera Condon.



## Declamation

Mr. and Mrs. A. C. Stenson, representing the CITIZEN'S BANK of Colome, recognized the declamation students and their accomplishments at a banquet in December.



STANDING: (Left to Right) Mrs. Gretschmann.  
SEATED: Kay Haukaas, Anita Spinar, Darlene Krivanek, Edythe Lilly and Vera Kaiser.

BELOW  
STANDING: Mrs. Gretschmann, Joe DeSmet.  
SEATED: Shirley Modine, Marsha Vroman and Bayone Stenson.

The declamation group has been very active since early fall and has represented their school in a very commendable way.

Eighteen students competed in local work. Five of these were chosen to speak at the district meet. They were: Kay Haukaas, Vera Kaiser, Anita Spinar, Edythe Lilly and Darlene Krivanek. Edythe and Vera earned "Superior" ratings and Anita was given an "Excellent". On the basis of these victories Colome won the district trophy.

Four Students--Marsha Vroman, Bayone Stenson, Shirley Modine, and Joe DeSmet were selected to compete in the Hickory Stick contest. Each of the girls came through with the first place medals to give Colome high scores in that meet.

Marsha, Bayone, and Shirley spoke at an invitational tourney in Springfield where they were given two "Excellents" and a "Good".

Several of the speakers have appeared on various other programs so their speech program has been a full one.

Nine of the students were doing their first work in speech.



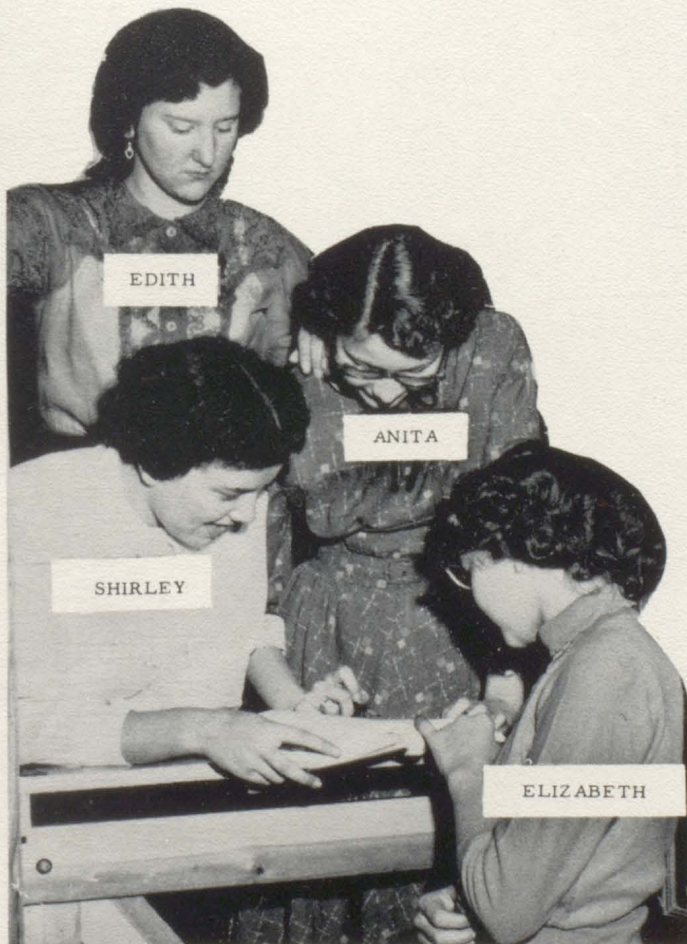
STANDING: Marsha Vroman, Dorothy Bowers, Bayone Stenson, Edward Wagner, LaVonne Krivanek, Joe DeSmet, Donna Larson, Gordon Keogh, Norma Farris, Edythe Lilly and Anita Spinar.  
SEATED: Delores Kewley, Shirley Modine, Darlene Krivanek, Vera Kaiser, Kay Haukaas, Marlene Dykeman, and Lois Bertram.





LIBRARY  
STAFF

Stan Stenson, Mr. Lapp, Larry Larson, Velma Harter, Edith Schoonhoven, Darlene Elliot, Shirley Modine, and Anita Spinar.



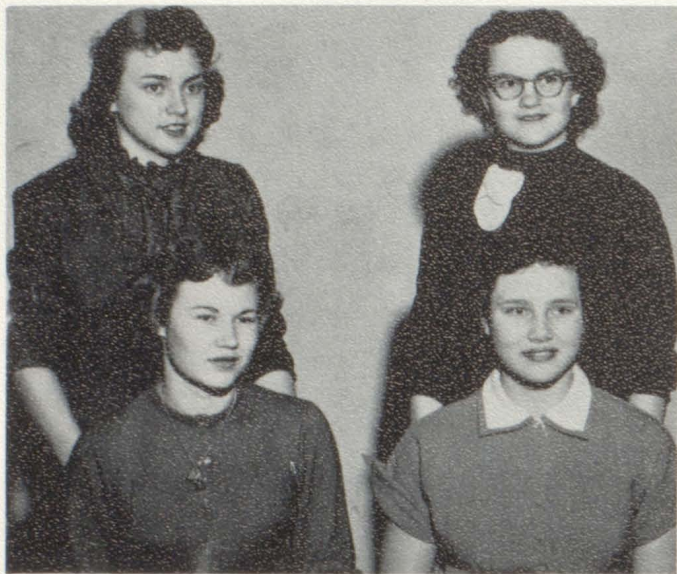
The library was under the direction of Mr. Lapp.

Several new books have been purchased as well as subscriptions to several magazines and two daily newspapers.

MR. LAPP







BACK ROW: Marsha Vroman, Vice-President;  
Velma Harter, President.  
FRONT ROW: Kay Haukaas, Secretary, Sharon  
Sorber, Treasurer.

### Club Officers

The Pepperettes were brought about by a reorganization of the Cowgirls Club.

Besides sponsoring several fund raising projects to buy cheerleading suits, they were the spark behind the Spring Carnival.

All vocal groups were organized within the Pepperette Club.



### The Pepperettes







### "A" Cheerleaders

LEFT TO RIGHT: Phyliss Kewley, Anita Spinar, Marsha Vroman, and Veima Harter.



### Grade Twirlers

BACK ROW: Mary Pietz, Linda Aden, LaVonne Holden, Patty Rehak, Minnette Wolthoff, Lila Holden.  
 SECOND ROW: Marsha Vroman, Joan Brown, Marian Farr, Belva Keever, Margie Maas, Patty Tarr, Meriam Farr, Susan Tarr, Anita Spinar.  
 FRONT ROW: Shirley Stahlecker, and Marilyn Manzer.



TWIRLERS



MARSHA VROMAN AND ANITA SPINAR





# Music



## Sextette

Dorthey Bower, Rozella DeMers, Elizabeth Reister, Jeanne Manthey, Joy Manthey.  
(Not Pictured, Joyce Waltorff).



STANDING: Sharon London, Vera Kaiser,  
SITTING: Bayone Stenson, Marsha Vroman,  
Shirley Modine, Darlene Krivanek,  
my Wagner, Marlene Dykman, Phyl-



KAY HAUKAAS



MELVIN HEATH  
Square Dance Caller and  
Director Steel Guitar.

## Soloists



Edith Schoonhoven, Sharon London,  
Vera Condon, Vera Kaiser, Kay Haukaas.





Instructor, Mr. George Weickum, Joyce Walthoff, Donna Larsen, Edward Wagner, Shirley London, Karen Bjornsen, David Wagner, Vera Condon, Jim-lis Kewley, Joan Dill.



RICHARD SMITH, KAY HAUKAAS

## Duet Groups



ELIZABETH REISTER  
DOROTHY BOWER



SHARON LONDON  
KAY HAUKAAS

BAYONE STENSON  
EDITH SCHOONHOVEN



JUDY HOLLOPETER  
VERA CONDON



DELORES KEWLEY



## Commercial Classes



## Typing I Class



SHORTHAND GIRLS ARE BUSY TAKING DICTATION.





**Freshmen in General Science**



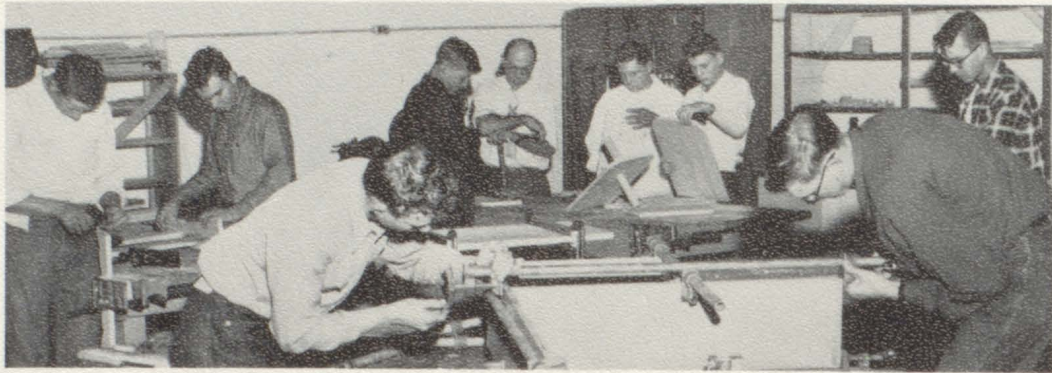
**Sophomore's Studying Biology**

**Experimenting in Biology**

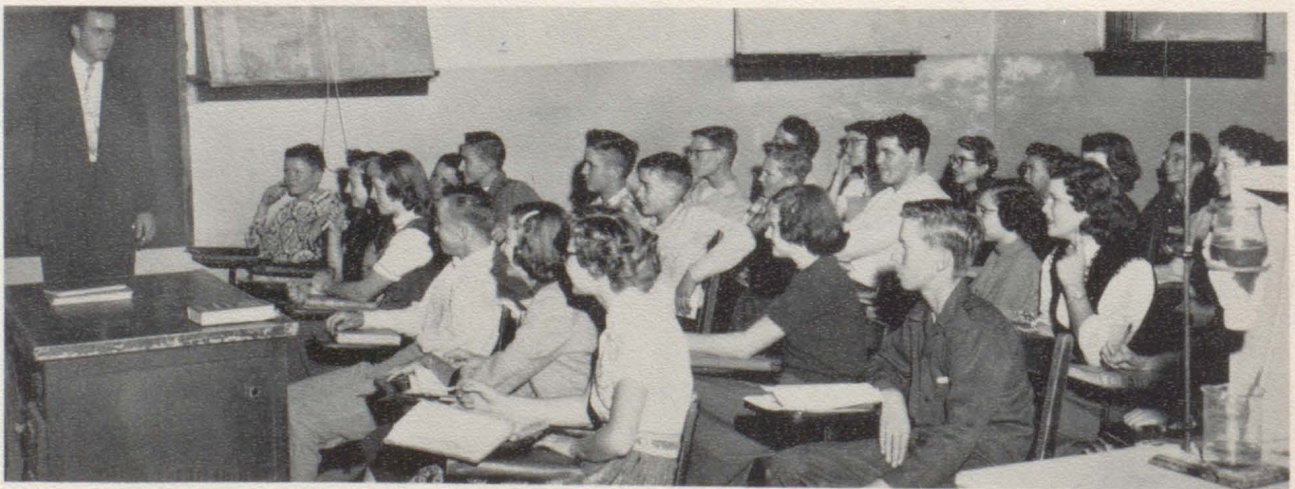
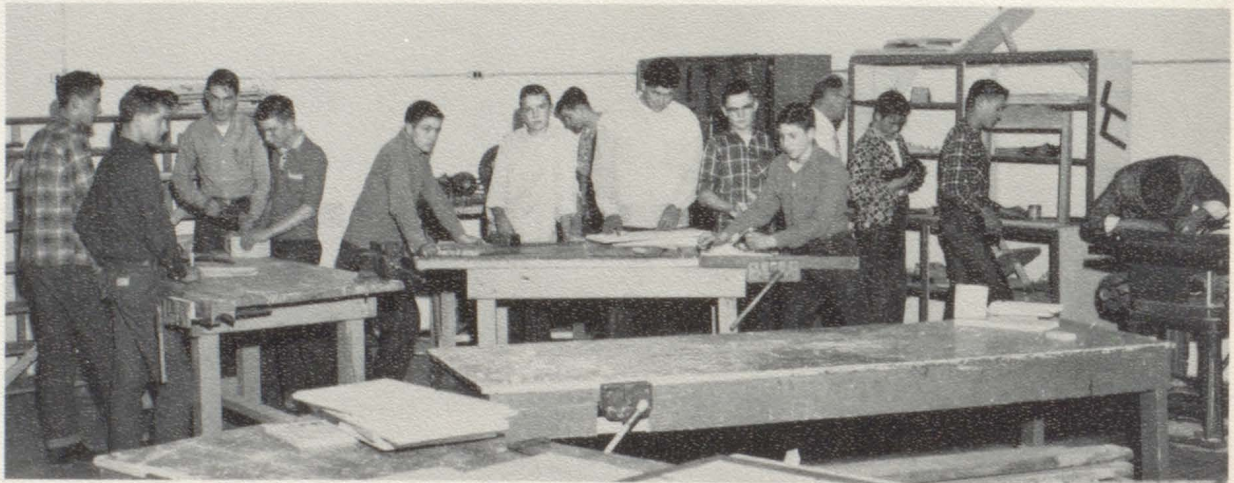




## Junior and Senior Shop Class



## Sophomore Shop Class



Mr. Klosterman is conducting the Freshman Geography class.



# Commercial Classes



TOP: This Bookkeeping Class is journalizing and posting their days transactions.  
MIDDLE: This Steno Class is performing the actual tasks that are done in an office.  
LOWER: Advanced Typing II Class.





## Ronald Croston Refuses To Let Loss of Hand Hamper Him.



Ronald Croston, 16 year old Colome Junior is at his typewriter ready to get in a few licks at his typing exercises. Ronald, although minus his left hand which was lost in a farm accident, has not let his misfortune be much of a handicap. He has learned to adjust himself to the loss; and, through courage and perseverance, is able to handle such tasks as typing and manual training which usually take two hands.

## English III Class



English Literature is occupying the time and effort of this class. Mr. Lapp is the teacher.



## "C" Club Athletic Lettermen



BACK ROW: Mr. Klosterman, Sponsor; Richard Smith, Richard DeMers, Connie Aubert, Darrell Pochop, Loran Tarrell, and Robert Korb, Secretary and Treasurer.

MIDDLE ROW: Franklin Gish, LaWayne Bellander, Joe Keever, DuWayne Maas, Vice-President; Paul Pietz, and Stan Stenson.

SITTING: James Manzer, Larry Larson, Vern Bertram, Vern Modine, President; Jack Cork.

## Student Council



STANDING: (Left to Right) Franklin Gish, Melvin Heath, and James Manzer.

SITTING: Lois Bertram, Darlene Krivanek, Russell Tarrell, Vera Kaiser, and Judy Holopeter.



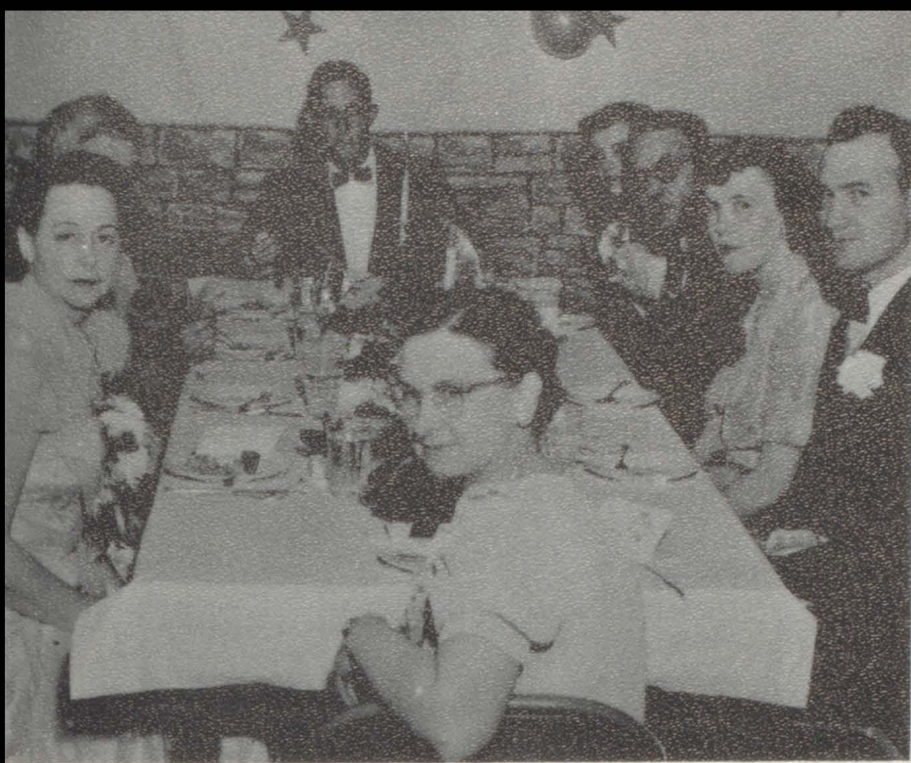


GAIETY AT THE PROM

THE STUDENTS ARE SERVED



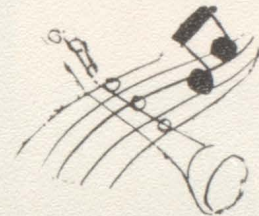




FACULTY TABLE



PROM AND BANQUET OF '54



The Prom and Banquet of 1954 was a grand success with food and dancing aplenty.

"Moonlight and Roses" was the theme.

Lights nestled among the rocks around a lily pool peeked out at the festive group while candle-lit lilies floated on the water.

After the banquet the Juniors and their guests went to the dance hall for the prom. Johnny Heider and his music men furnished the music for Colome High School students, alumni, and faculty.



BANQUET WAS PREPARED BY THE JUNIOR MOTHERS

SOPHOMORE STUDENTS SERVED THE MEAL





# Homecoming (Round-up)

THE SENIORS' ROYAL FLOAT WON FIRST PRIZE.



CAPTAIN JOE KEEVER  
CROWNS  
QUEEN VELMA HARTER



HOMECOMING QUEEN Velma Harter and her Attendants:  
Lorraine Couch, Vera Condon, Joan Dill, Darlene Krivanek,  
Bayone Stenson, and Edith Schoonhoven.



THE FRESHMAN FLOAT COPPED SECOND PRIZE.



ED WAGNER  
DOROTHY BOWERS

JOE DeSMET  
SHARON SORBER



# Visiting Bands



WINNER



BURKE



COLOR GUARD



# Grade Floats



THESE LITTLE TOTS TOOK FIRST PRIZE.



HISTORICAL EVENTS.



LITTLE HOMEMAKERS.



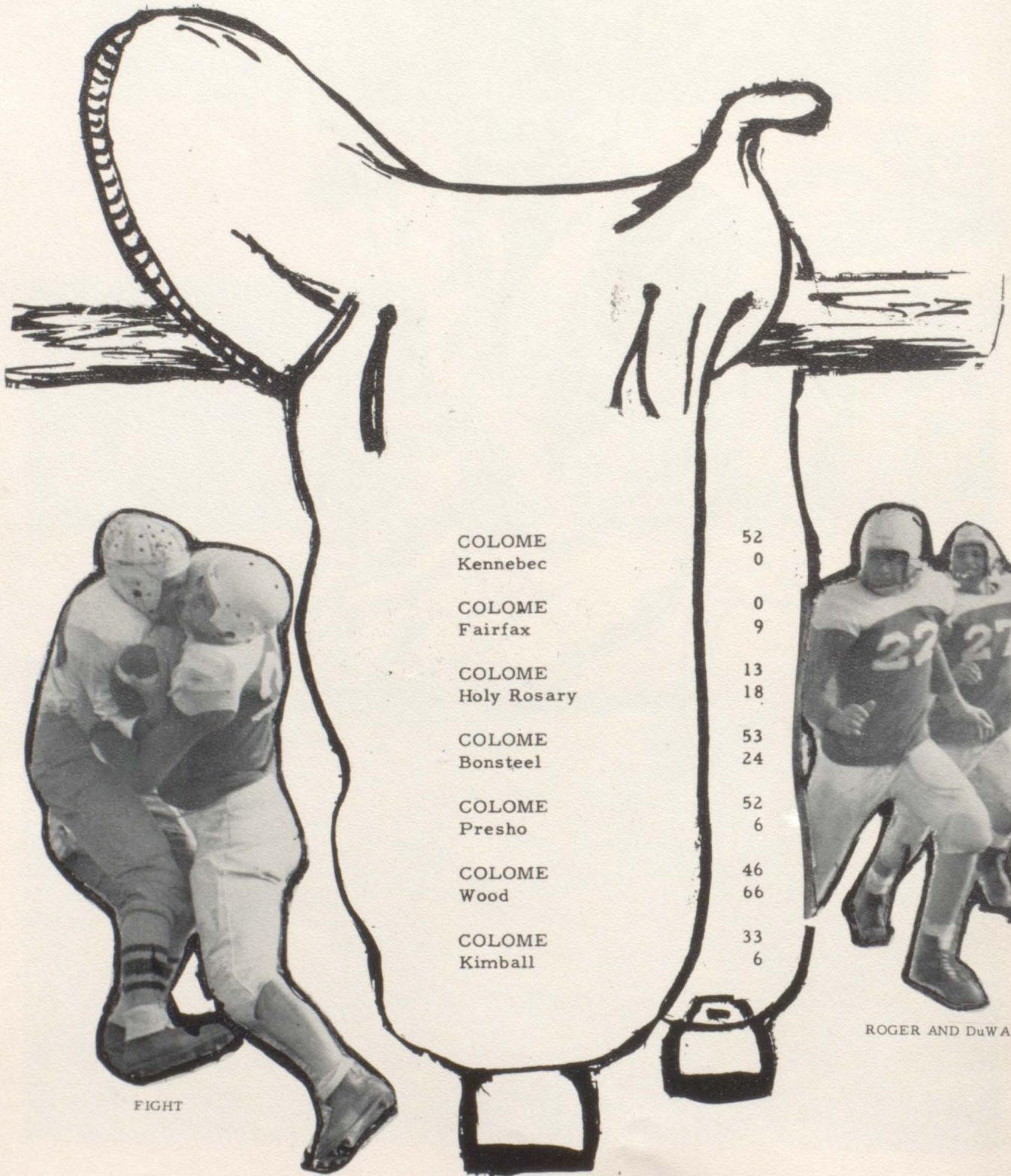
SAFETY FIRST IS A GOOD PRACTICE.







# SCOREBOARD



COLOME  
Kennebec

52  
0

COLOME  
Fairfax

0  
9

COLOME  
Holy Rosary

13  
18

COLOME  
Bonsteel

53  
24

COLOME  
Presho

52  
6

COLOME  
Wood

46  
66

COLOME  
Kimball

33  
6

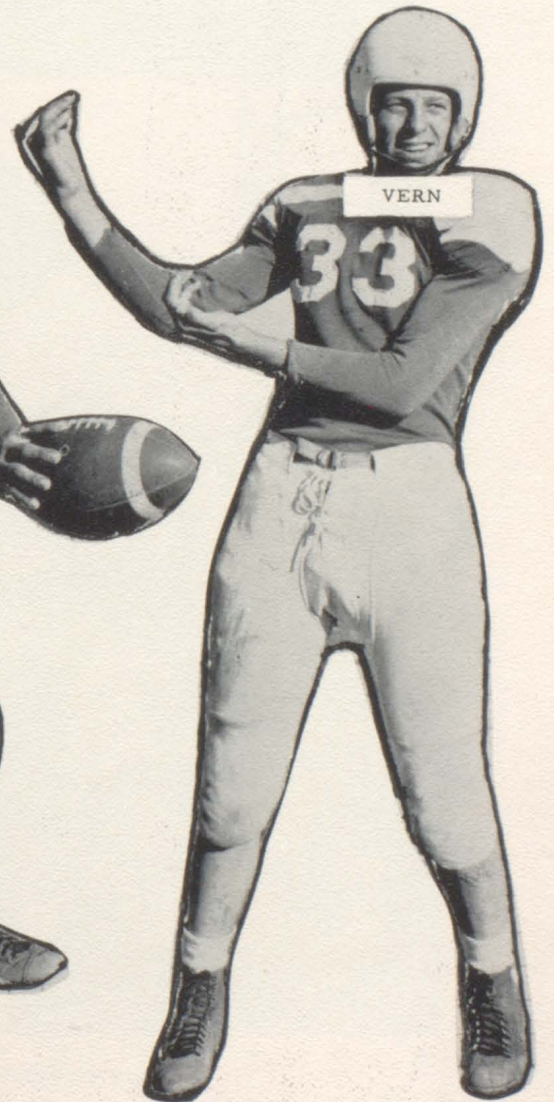
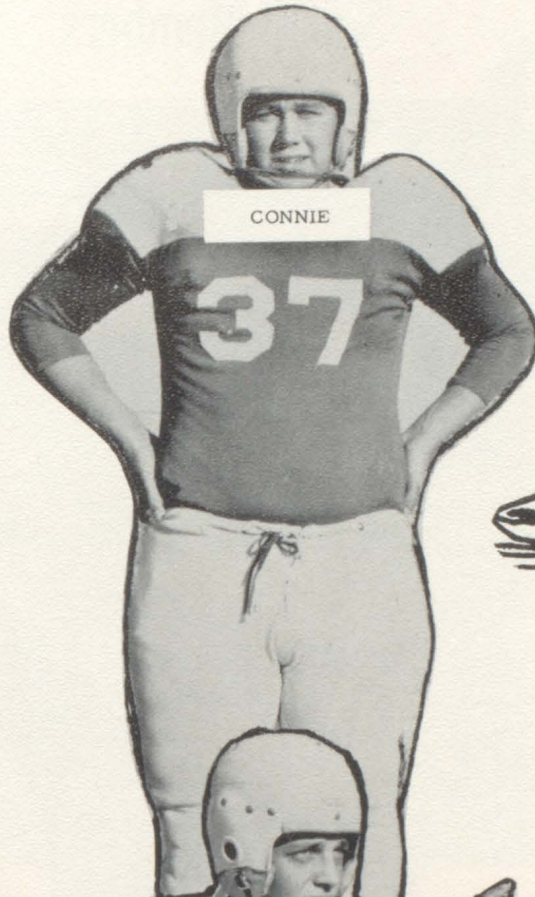


ROGER AND DuWAYNE

FIGHT

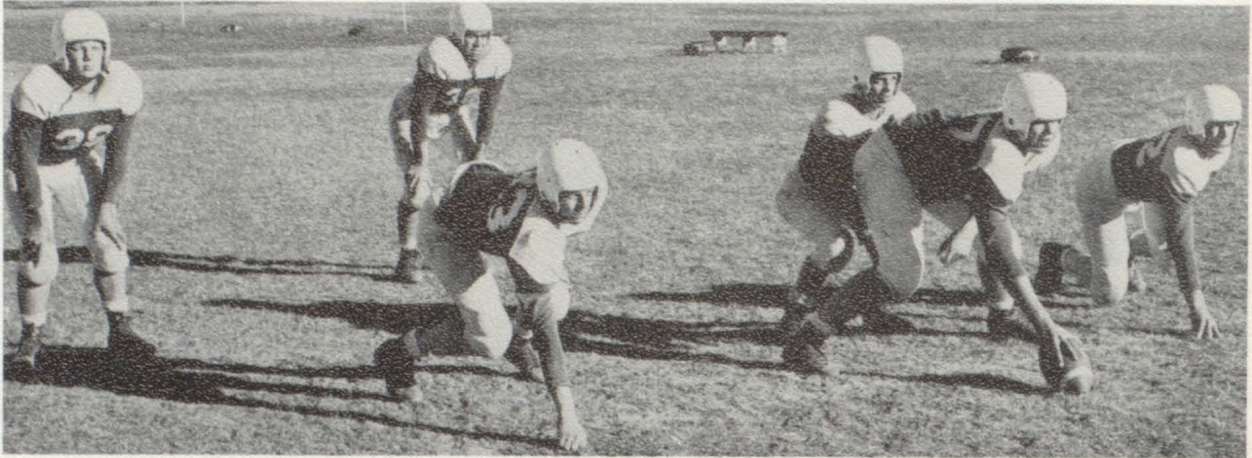


The Cowboys' banner for '55 will be carried by these underclassmen.





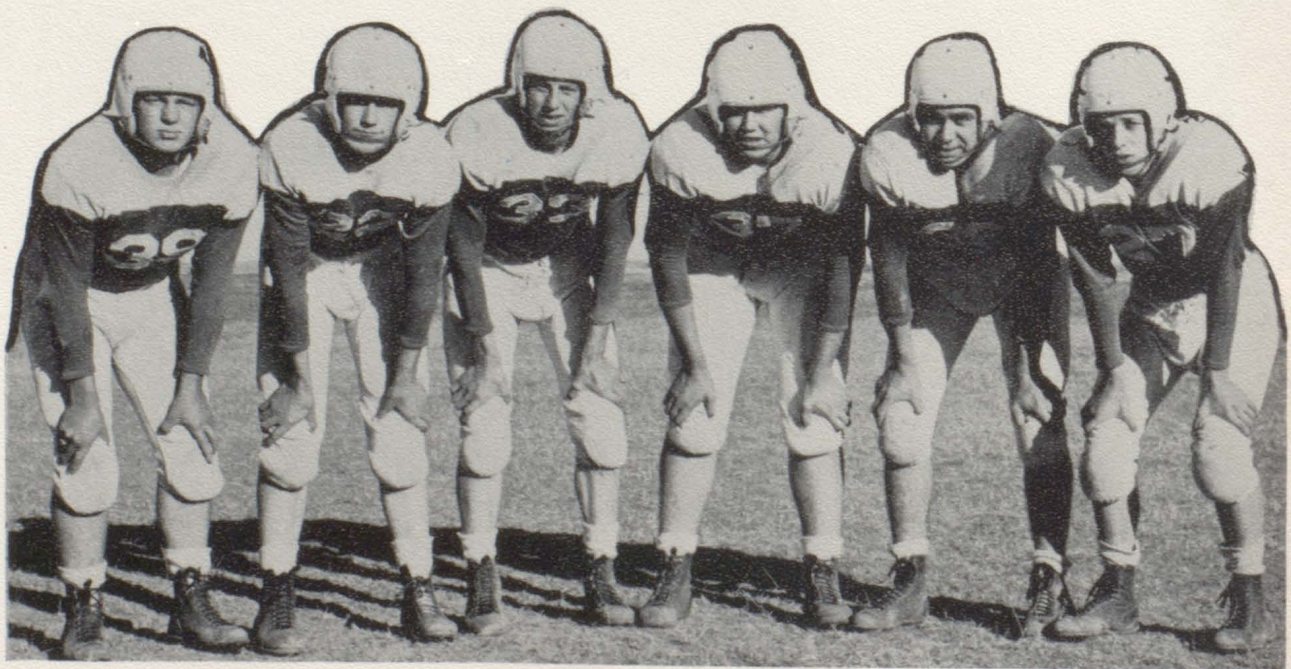
# Squad Members



FIRST DOWN.

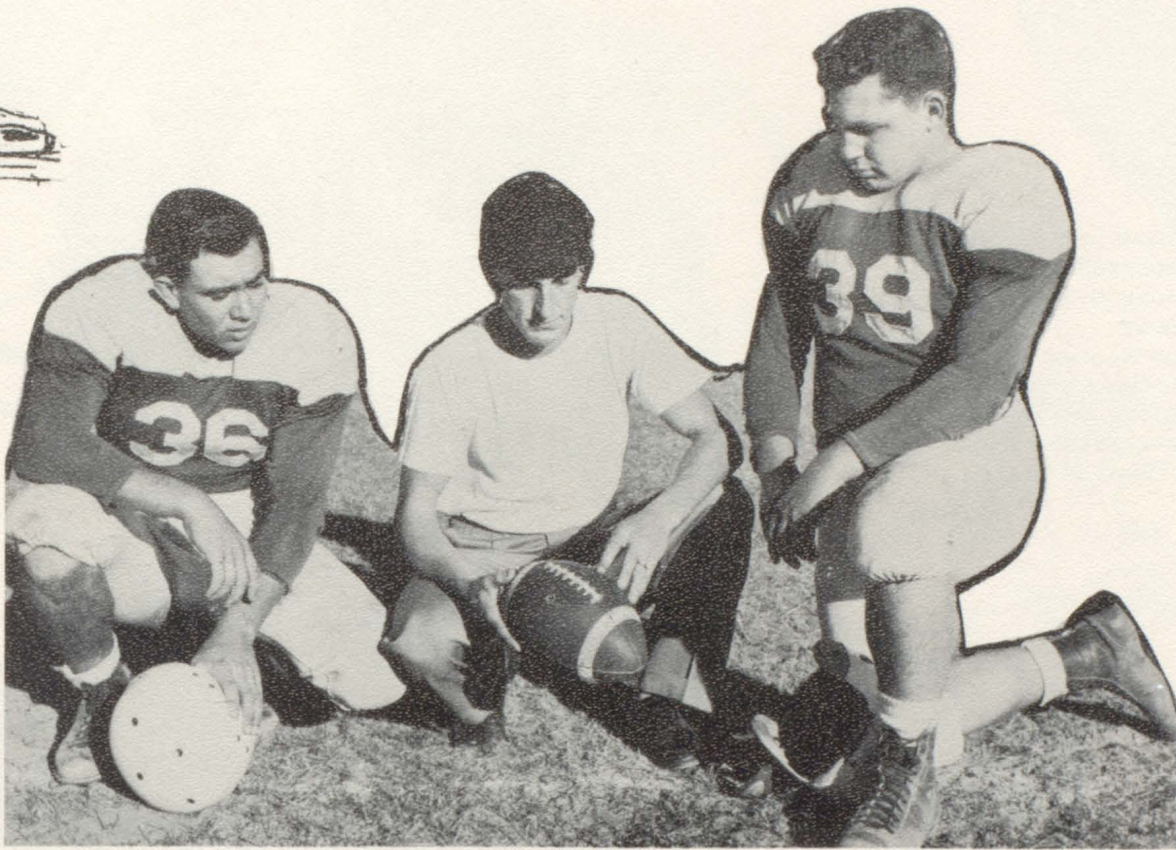


In  
Action



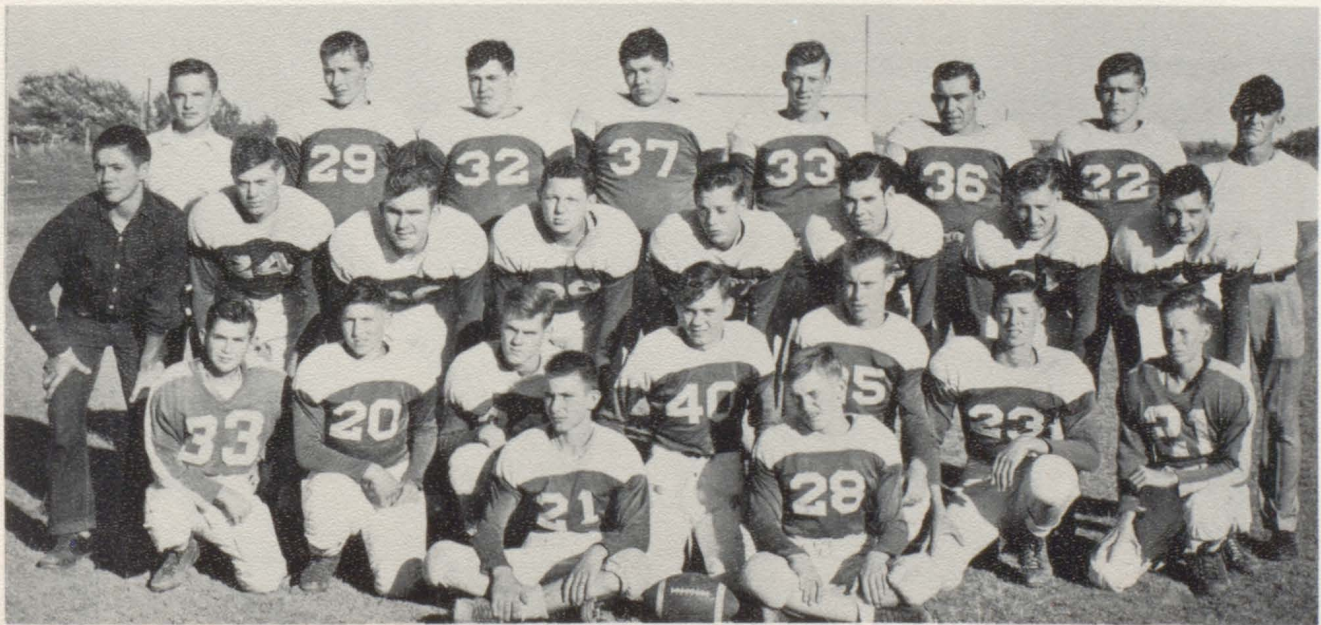
LEFT TO RIGHT: Joe Keever, Roger Pochop, Vern Bertram, Connie Aubert, Vern Modine, DuWayne Maas.





VERN MODINE                      AND                      JOE KEEVER  
 CAPTAINED

## 1954 Cowboy Squad



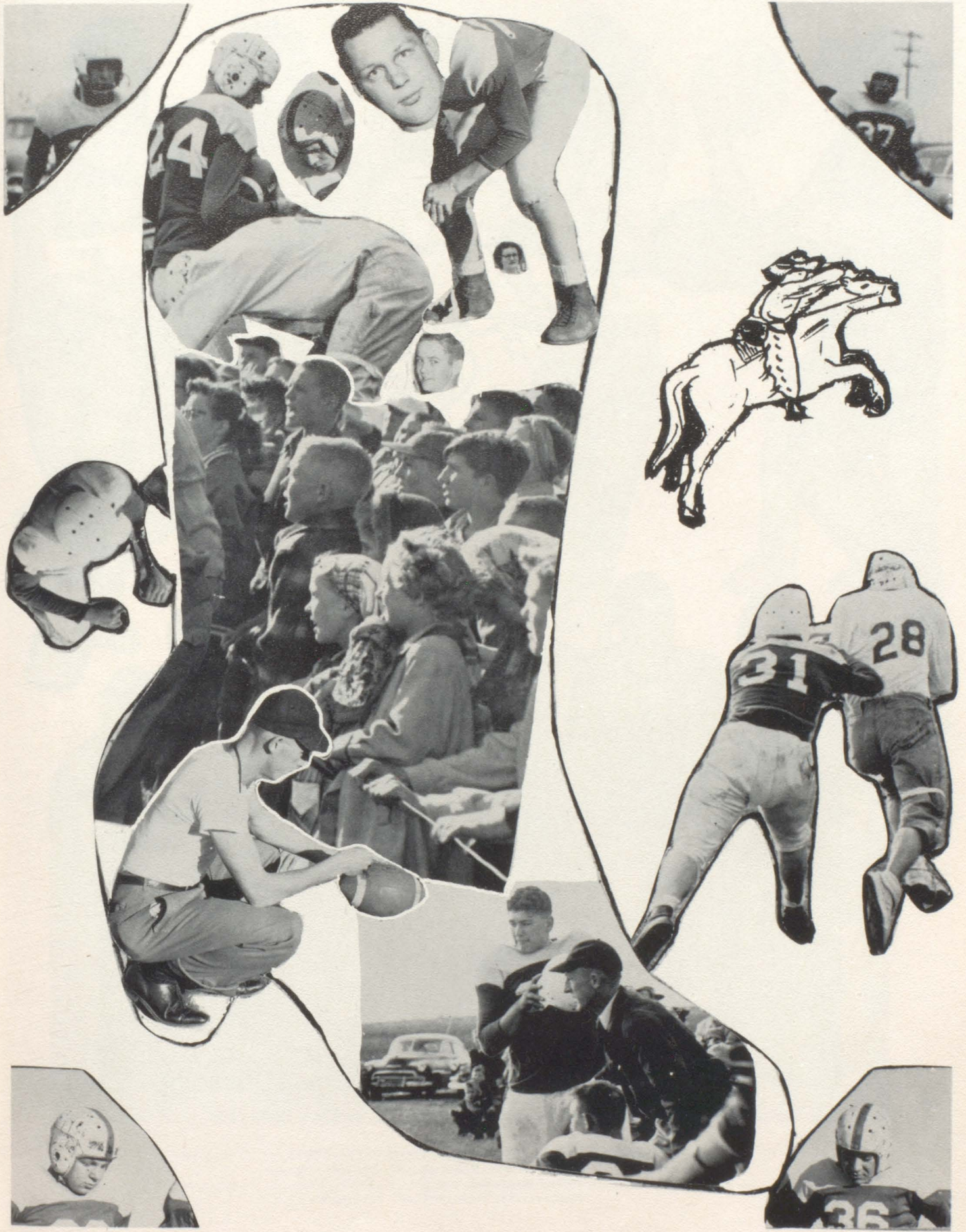
LEFT TO RIGHT: Richard Smith, Manager; Darrel Pochop, Monty Woolhiser, Connie Aubert, Vern Bertram, Vern Modine, Roger Pochop, Coach Uken.  
 SECOND ROW: Paul Pietz, Manager; Richard DeMers, Russell Tarrell, Joe Keever, DuWayne Maas, Loran Tarrell, Frank Gish, Roger Miller.  
 THIRD ROW: Emil Kaiser, LaWayne Bellander, Albert Dawson, Darus Dawson, Jerold Hodgins, Larry Bertram, Lonnie Hodgins.  
 FRONT ROW: Jimmy Manzer, Stanford Stenson.



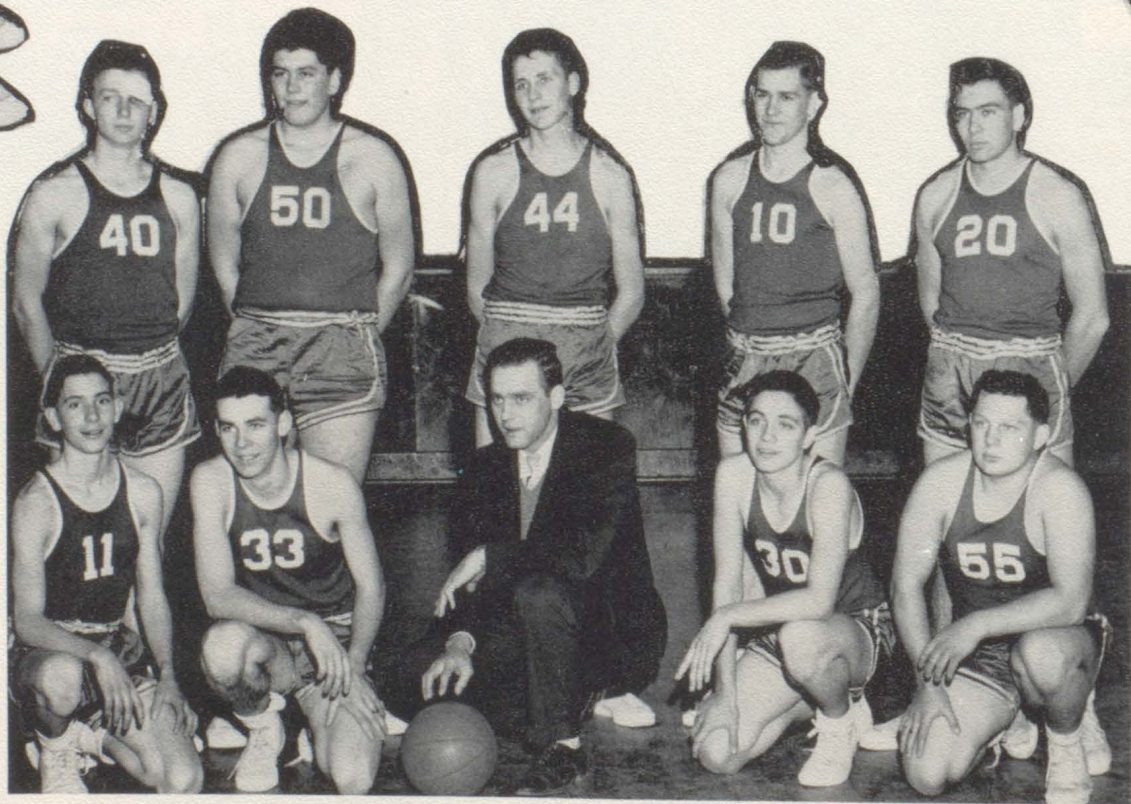
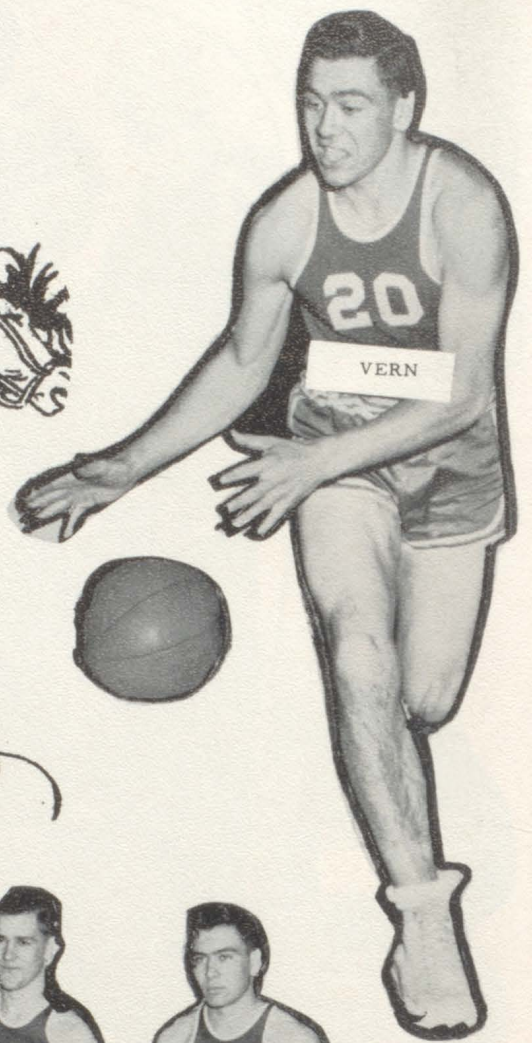
These four strong men represented the Senior Class on the football squad. Joe Keever and Vern Modine earned their letters and were chosen co-captains of this year's football team.











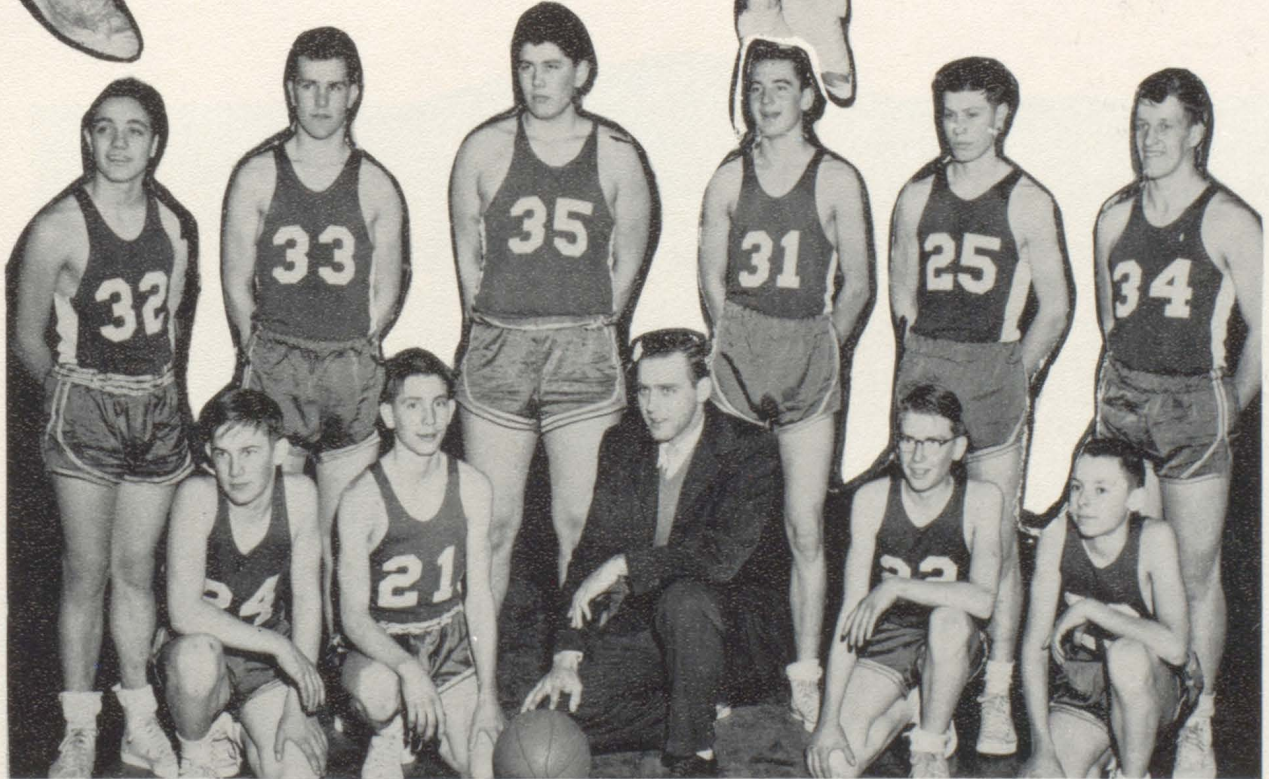
**"A" Squad**

STANDING: (Left to Right) Larry Larson, Connie Aubert, Darrel Pochop, Roger Pochop, Vern Modine.  
SITING: Jimmy Manzer, Loran Tarrell, Coach, Mr. Klostermann; Paul Pietz, and Joe Keever.



BASKETBALL

SQUAD



STANDING: (Left to Right) Paul Pietz, Roger Pochop, Connie Aubert, Roger Miller, Richard DeMers, Franklin Gish.

SITTING: Stanford Stenson, Jimmy Manzer, Coach, Mr. Klostermann; Billy Manzer, and Ed Wagner.



## "B" Cheerleaders



LEFT TO RIGHT: LaVonne Krivanek, Shirley Modine,  
Kay Haukaas, Verna Woods, (not pictured).



## Grade Cheerleaders



CLOCKWISE: Myrna Manzer, Karen Bjorsen, LeAnn Holden, Janet Rehak, Janice Reed.





### Fifth and Sixth Grades

FIRST ROW: Jimmy Wagner, Shirley Stahlecker, Raymond Aubert.  
 SECOND ROW: Ruben Leetch, Patty Rehak, Jimmy Pietz, Jean Kewley, Jimmy Jelinek, Minet Walthoff, (Standing); Mrs. Reiners, Teacher.  
 THIRD ROW: Judy Wagner, George Leetch, Marilyn Manzer, Frank Farr, Douglas Stenson.  
 FOURTH ROW: Margie Maas, Dennis Stahlecker, and Duane DeMers, Larry Welch, (Standing).



### Seventh and Eighth Grades

FIRST ROW: Karen Bjornsen, Merle Pochop, Billy Manzer, David Wagner.  
 SECOND ROW: LeeAnn Holden, Leonard Peters, and Mrs. Pfeifer, Teacher.  
 THIRD ROW: Janet Rehak, Myrna Manzer, Buddie Bowers, Jerry Koenig.  
 FOURTH ROW: Robert Dykeman, Stephen Farr, Janice Reed, Bob Tarr, Myron Croston.





### Third and Fourth Grades

STANDING: Mrs. Gueraud, Teacher.  
 FIRST ROW: Mary Jelinek, Inez Leetch, Lila Holden, Belva Keever.  
 SECOND ROW: Norman Stahlecker, Marian and Miriam Farr, Carol Kewley.  
 THIRD ROW: Patty Tarr, Larry Koenig, Linda Aden, Lavonne Holden, Carol Demers.  
 FOURTH ROW: Kenny Maas, Mary Pietz, Joann Brown, Gary Brown, Garold Waldoff, Joe Pfeifer, Delane Steiger.



### First and Second Grades

STANDING: Mrs. Seeley.  
 FRONT ROW: Patty Stahlecker, Marvin Farr, LeRoy Painter, Larry Holden, Ronnie Connick.  
 BACK ROW: Janell Reed, Tamra MaWhinney.  
 CHAIRS: (Left to Right) Curtis Leetch, Bruce Lewis, Terry Briggs, Buddy Bair, Susan Tarr, Terry Pechota, Frank Pfeifer.  
 TABLE: (Left to Right) Lupe Diaz, Stanley Keever, Winifred Farr, Margie Diaz, Aloa Tarrell, Donald Manazer.



# Snapsshots



"TUT"  
IN  
MIAMI



GOING TO A PARTY?



WE ALL WENT TO MITCHELL.



QUARTETTE??



TRYING OUT FOR THE CHORUS LINE?



EIGHTH GRADE GRADUATION.



ROBBING THE CRADLE, BAYONE?



ENJOYING AN  
ASSEMBLY  
PROGRAM?



YOUNG COWBOY



BAYONE'S SLUMBER PARTY.

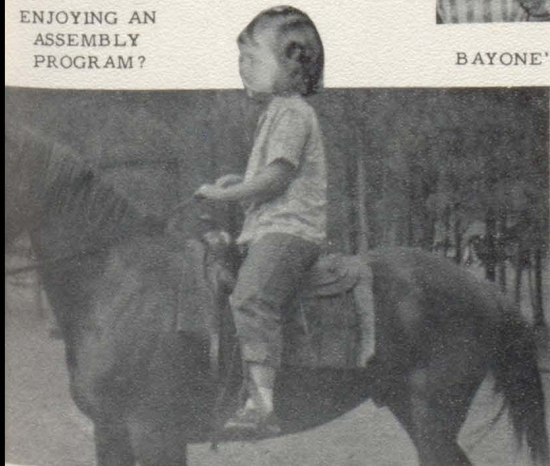


"SWEDIE" SMILE



BASHFUL???

SCHOOL, OR GOING  
SOME PLACE??



IF GLENNY CAN RIDE A HORSIE, SO CAN I!



THE KRIVANEK SISTERS



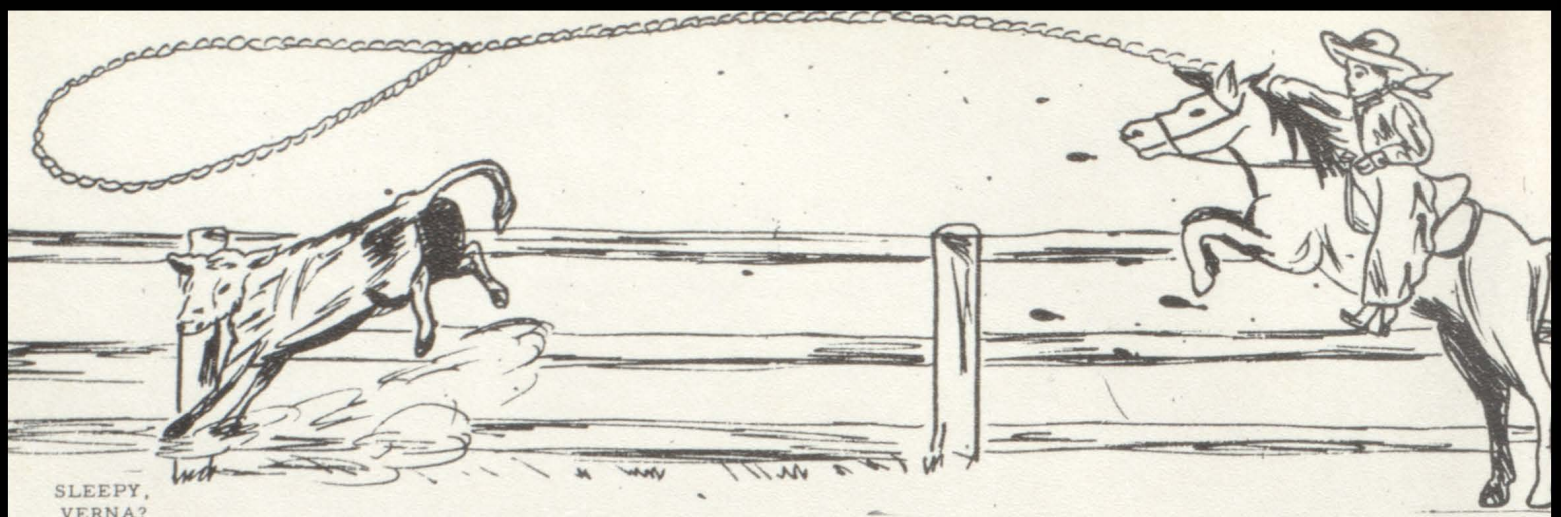
NOT YOU, TOO???



THE END.







SLEEPY, VERNA?



OLDER-GROWN CHEERLEADER



THE BETTER HALF



'WE GREEN FRESHIES, ETC.'

HANDS ACROSS THE TABLE.



VERN ENFORCES INITIATION RULES.



PEEKING, HUH?



YOU DON'T SAY!



SINCE WHEN, VERA?



"AND, NOW, MY FRIENDS---"



DONEEN



OH! JO!



THE GOOD OL' DAYS



PRACTICING?



HAPPY



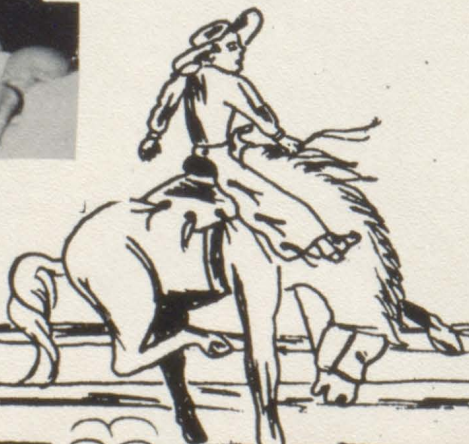
CUTE CHEERLEADER



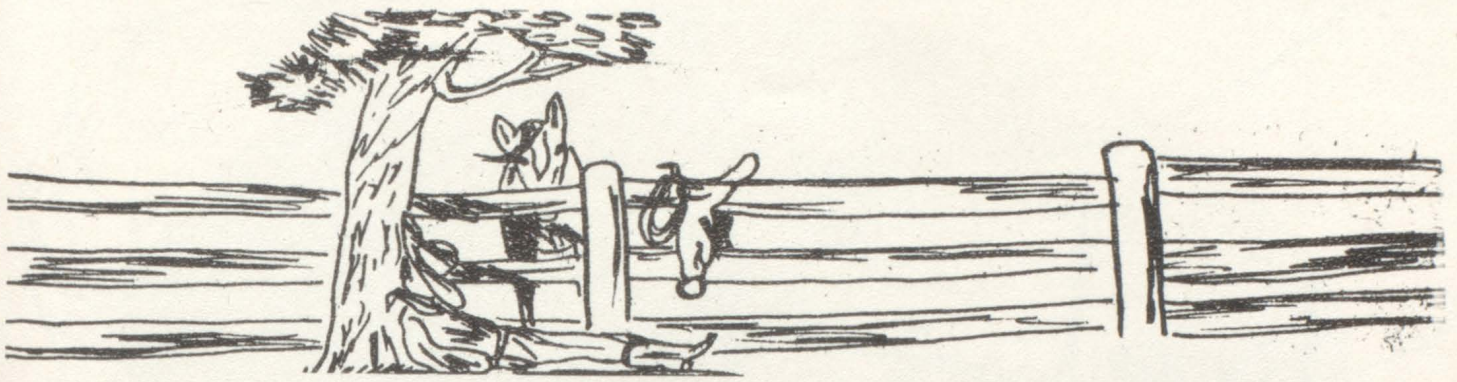
OLDER-GROWN BASKETBALL PLAYERS



CHATTANOOGA SHOE-SHINE GIRL







THE "DYKEWOODINES."



SMILE  
PRETTY



THE  
MOMBO?



POSING????



MY!



INTERESTING?????



WOW!



PSYCHOLOGY??



LOAFING AS USUAL.



IS IT GOOD?



HUG 'EM UP TIGHT



NEW HAT?



CRAZY MIXED-UP KID.



AREN'T THEY CUTE?



THREE MUSKATEERS



PALS.





**Colome High School Dormitory**  
WHERE STUDENTS STAY DURING THE WEEK.



MEALTIME IN THE DORMITORY.



MR. LONDON SUPERVISING  
THE CHOW-LINE.







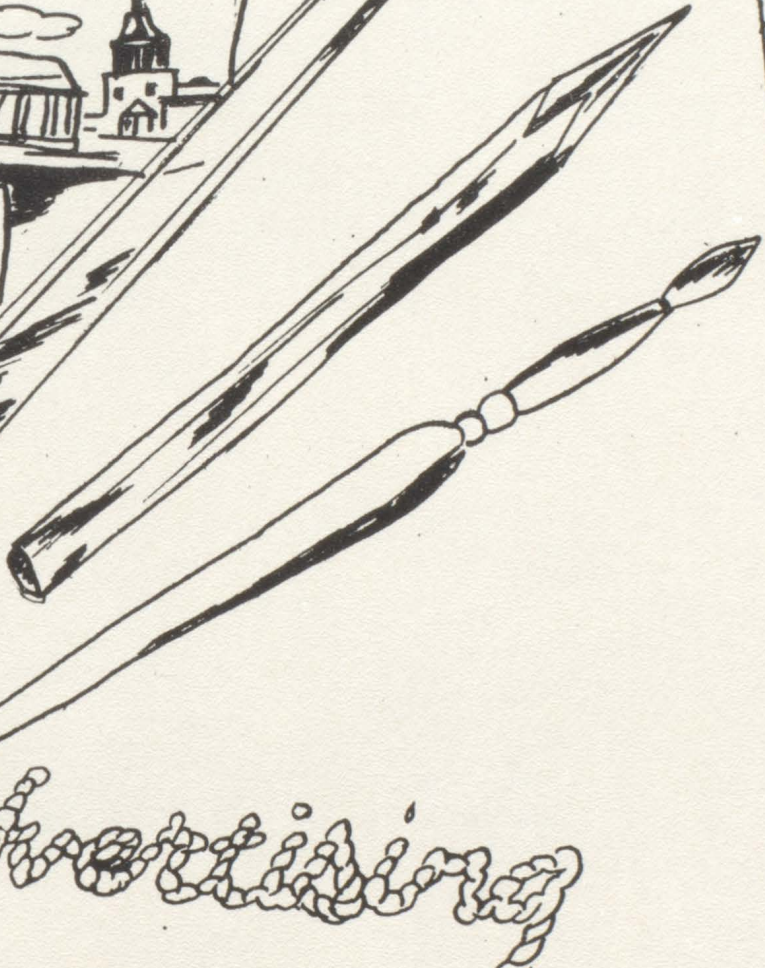
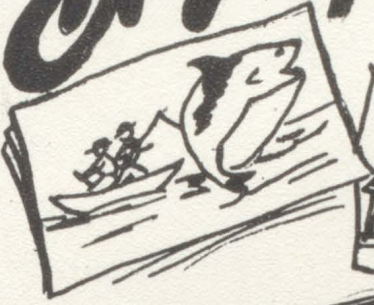
# Autographs



**WALSWORTH**  
Lithographed & Bound by  
**WALSWORTH BROTHERS**  
Marceline, Mo., U. S. A.



Enjoy!



Decorative script text, possibly a signature or brand name.



CITIZENS BANK  
of COLOME

MEMBER

OF

FEDERAL DEPOSIT INSURANCE CORPORATION

COLOME, SOUTH DAKOTA



# Gene's Produce

Your Cream, Eggs, and Poultry

Headquarters

Wayne Feeds

Phone 4281

Colome, South Dakota



*Rosebud* **PHOTO** *Company*  
WINNER AND GREGORY, SO. DAK.



# Farmers Supply Company

L. T. "Ren" Wilcox

Case, Massey-Harris  
Willys Jeeps, Minneapolis-Moline

Phone 88

309 North Main Street

Winner, South Dakota

---

Congratulations

From

A Friend

---

# Outlaw Trading Post

"A Complete Department Store"

For Your Shopping Needs

See Us

Winner, South Dakota



# Gamble's

Hardware, Ready-to-Wear

Phone 47

Winner, South Dakota

---

# Winner Gas & Electric Co.

"Everything For The Home"

Furniture - Plumbing - All Floor Coverings  
Gas and Electric Appliances

Gas and Oil Heating

Appliances

Winner, South Dakota

---

# Soper's Hatchery

Hi-Quality Chix

Buyers Of Cream, Eggs, Poultry

Remedies, Feed, Supplies

Colome, South Dakota



# Zimmerman Hardware

Shelf and Heavy Hardware

Plumbing and Heating

Phone 4291

Colome, South Dakota

---

Sell Your Livestock At Auction

The Modern Method Of Selling

WINNER LIVESTOCK AUCTION COMPANY

Sales Every Friday

Winner, South Dakota

---

CARSON'S

HI-WAY MARKET

"Sells Good Food For Less"

Winner, South Dakota



HAROLD J. VOLZ, INC.

INSURANCE

Winner, South Dakota

---

BAILEY "REXALL" DRUG

Prescriptions - Pharmacists

Novelties

Phone 32

Winner, South Dakota

---

PRANG'S APPAREL SHOP

Ladies' Ready-to-Wear

Style Merchandise - Priced Right

Winner, South Dakota

---

"We Make Homes Out Of Houses"

SCHRAMM FURNITURE

Furniture - Floor Coverings

Samsonite Luggage - Hoover Cleaners

Lane Cedar Chests

Winner

Phone 52

South Dakota



FARMERS COOPERATIVE ASSOCIATION

For The Farmers Needs

Dallas, South Dakota

C. J. GROSSENBURG AND SON

John Deere Sales and Service

Farmhand Machinery

Pontiac Sales and Service

Winner, South Dakota



COLLINS IMPLEMENT

Trucks - Tractors - Parts

Service - Implements

Phone 57

Winner, South Dakota



WAGNER MARKET

Groceries and Meats

Phone 4571

Colome, South Dakota

COLOME LOCKER

Complete Locker Service

Phone 4641

Colome, South Dakota



SCHULTZ STANDARD SERVICE

One-Stop Service

Your Business Appreciated

Phone 7501

Gregory, South Dakota

---

Gregory Branch

NORTHWEST SECURITY NATIONAL BANK

Of Sioux Falls

Complete Banking Service In A Friendly Way

Gregory, South Dakota

---

E. B. BRADLEY AGENCY

Real Estate - Rentals - Insurance

Phone 4261

Colome, South Dakota

---

MANZER'S STANDARD SERVICE

DeSoto - Plymouth

Sales - Service

Phone 4241

Phone 4243

Colome, South Dakota



ROSEBUD AUTO

SALVAGE

Auto Parts, Army, Navy Surplus

Gregory, South Dakota

---

G. F. JOHNSON

Attorney at Law

Gregory, South Dakota

---

JELINEK MOTOR COMPANY

Chrysler - Plymouth

Sales - Parts - Services

Gregory, South Dakota

---

SEELEY JEWELRY

See Seeley For Jewelry

Dial 6821

Gregory, South Dakota

ORLLEY'S VARIETY

Gifts - Toys - School Supplies

Confections - Novelties

Paints - Housewares

Gregory, South Dakota

---

HIP AND HILLTOP

THEATER DRIVE-IN

Will Jonas, Manager

Gregory, South Dakota

---

LUELLYN CAFE & HOTEL

A Good Place To

Eat and Sleep

Gregory, South Dakota

---

DEVISH CLEANERS

Dry Cleaning Service

Gregory, South Dakota



FULLERTON LUMBER COMPANY

Lumber, Coal

All Kinds Of Building Material

Phone 4171

Colome, South Dakota

---

Compliments Of

COLOME LIQUOR STORE

Nick Kerber, Manager

---

NANCE ELECTRIC

Rewind Motors - Wiring

Radio, TV Installation

Dial 4811

Colome, South Dakota

---

Compliments

Of

A FRIEND

SPORT CENTER

Beer - Candy - Pool

Art Earl, Proprietor

Colome, South Dakota

---

FRESCOLN AND RANDLE

Grain - Hogs - Norco Feeds

Phone 4531

Colome, South Dakota

---

THE EQUITABLE LIFE OF U. S.

Retirement Income

Annuities

Juvenile Educating Plans

Perry Lewis, Representative

Phone 4082

---

ED'S REPAIR SHOP

General Repairing

And Welding

Phone 4581



DEWEY FRESCOLN

Order Buyer

Fat Hogs and Hogs

Winner, South Dakota

NESPOR HARDWARE

Electric Appliances

Phone 3

Winner, South Dakota

WINNER

ICE AND FROZEN FOOD

LOCKERS

Dwight M. Mackaman

WM. ASSMAN AGENCY

"The House Of Insurance"

30 Years Of Service

Winner, South Dakota

SCHULTZ SHOE SERVICE

Shoes and Shoe Repairing

Of All Kinds

Winner, South Dakota

THE WINNER ADVOCATE

Serving The

Rosebud Territory

Winner, South Dakota

JOE'S CAFE

Best Coffee In Town  
Fine Foods And Plenty Of It

Mrs. Allen Zink

Phone 173W  
Winner, South Dakota

ALLER JEWELRY

Diamonds, Watches  
And  
Silverware

Winner, South Dakota



Compliments Of The  
NORTH SIDE LIQUOR STORE

Where Old Friends Meet

O. C. Kaster

Winner, South Dakota

---

THE CROSSROADS

"Set Your Table Better  
For Less  
With Our Everyday Low Prices"

Phone 33

Winner, South Dakota

---

MASON FUNERAL HOME

Modern Equipment And Chapel

625 West Third Street

Phone 5

Winner, South Dakota

---

LEWIS FURNITURE CO.

Dealer In Frigidaire Appliances  
And Maytag Washers  
Furniture Of All Kinds

Phone 7161

Colome, South Dakota

K. C. THOMPSONS PHARMACY

The Rexall Store

Try Thompson's First

Colome, South Dakota

---

JOHN O'NEILL AND SONS

Dearborn Farm Equipment  
Ford Tractors  
New Holland Balers  
New Idea Farm Machinery

Gregory, South Dakota

---

TILTON MOTOR COMPANY

Ford

Mercury

Gregory, South Dakota

---

NEWLON'S DEPARTMENT STORE

The Most Complete Store  
Of Merchandise

Phone 4461

Colome, South Dakota



SOCONY VACUUM OIL

A. A. Bjornsen, Agent

Prompt Delivery

Phone 4741

Colome, South Dakota

---

MUNSON OIL COMPANY

Hundreds Of Gasolines

But Only One

D-X

P. O. Box 368

Winner, South Dakota

---

FARMERS ELEVATOR

Feeds, Grain, Coal

Seed Cleaning, Seed Treating

Winner, South Dakota

---

CAMERSON HOTEL

Brick Construction

On Highways 18 and 183

Winner, South Dakota

KLAPPAL

Plumbing and Heating

Youngstown Kitchens

Timken Furnaces

138 Main Street

Winner, South Dakota

---

J. L. WEEK

Ford Tractor

&

Dearborn Implements

Winner, South Dakota

---

Authorized Ford-Mercury

HEWETT MOTOR COMPANY, INC.

Phone 17

Winner, South Dakota

---

KEY SERVICE STATION

Since 1922

Sinclair Gas and Oil

Goodrich and Goodyear Tires

Winner, South Dakota



GEORGE'S BARBER SHOP

Your Patronage Appreciated

Colome, South Dakota

HARRY SCHOONHOVEN

General Blacksmithing

And Welding

Colome, South Dakota



SON-RAY IMPLEMENT CO.

Sales - Complete - Service  
Firestone Tires, J-P-D Lubricants  
Shopwork, Grass and Forage Seeds  
Farm Hands, Headquarters For  
Phone 6391 - Gregory, S. Dakota

F. J. CHAMBERLAIN

Drugs - Ice Cream

Phone 4611

Colome, South Dakota

STEGERS CAFE & HOTEL

For Good Food  
Booth and Counter Service  
Coffee At Its Best

Phone 4251

Colome, South Dakota

O. W. MUNSON

Feeds - Seeds

Repairs

Colome, South Dakota

ELLIOTT'S MOBIL SERVICE

Mobil Tires and Batteries

Cigarettes, Candy, Pop, Beer

Phone 4551

Colome, South Dakota

GAMBLES

Ready-to-Wear  
Household and Hardware Needs  
Mr. and Mrs. Ben VaVrh

Phone 4561

Colome, South Dakota



<p>NEWSAM</p> <p>CHEVROLET COMPANY</p> <p>Chevrolet Sales, Service</p> <p>Telephone 4441</p> <p>Gregory, South Dakota</p>	<p>J. S. LUNN</p> <p>Real Estate</p> <p>Insurance</p> <p>Winner, South Dakota</p>
<p>DON McMEEN FARM EQUIPMENT</p> <p>Kelly-Ryan Equipment</p> <p>Allis-Chalmers</p> <p>Goodyear Tires, D-X Oil Products</p> <p>Dial 4661</p> <p>Gregory, South Dakota</p>	<p>PHARRIS BAKERY</p> <p>Breads</p> <p>Cookies - Pies</p> <p>Rolls - Cakes</p> <p>Gregory, South Dakota</p>
<p style="text-align: center;">B O O S T E R S</p> <p style="text-align: center;">TAGGART SERVICE STATION</p> <p style="text-align: center;">QUINN HATCHERY</p> <p style="text-align: center;">TRUHE PRODUCE</p> <p style="text-align: center;">LEE'S STORE</p> <p style="text-align: center;">PHEASANT CLEANERS</p> <p style="text-align: center;">WINNER LAUNDRY AND DRY CLEANING SERVICE</p> <p style="text-align: center;">DR. TOBIN, M. D.</p> <p style="text-align: center;">KING MOTOR AND OIL COMPANY</p> <p style="text-align: center;">MOBILGAS</p> <p style="text-align: center;">MILLS MOTOR COMPANY</p> <p style="text-align: center;">Winner, South Dakota</p> <p style="text-align: center;">COLOME CASH STORE</p> <p style="text-align: center;">Colome, South Dakota</p> <p style="text-align: center;">MR. BLOWERS</p> <p style="text-align: center;">FRANK JELINEK</p> <p style="text-align: center;">Funk's-G Seed Corn</p>	







